

RECESSED LUMINAIRES

Please pay attention: If the mounting pot of a respective product is included in the delivery, the stated mounting dimensions refer to the size of the mounting pot. The product dimensions always indicate the dimensions of the product without mounting pot.

LED reading luminaires



Page 306



Page 306

Recessed luminaires decorative



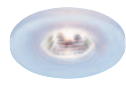
Page 364



Page 364



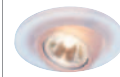
Page 365



Page 365



Page 365



Page 365



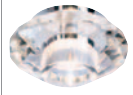
Page 381



Page 363



Page 362



Page 362



Page 362



Page 336



Page 362



Page 362



Page 375



Page 375



Page 363



Page 363



Page 363

LED luminaires compact



Page 336



Page 336



Page 336



Page 338



Page 338



Page 337



Page 336



Page 339



Page 339



Page 310



Page 340



Page 340



Page 343



Page 343



Page 337



Page 346



Page 344



Page 344



Page 319



Page 339

New Tria, square
MR16
QRB111
GU10
ES111
GX10
G12



Page 302



Page 302



Page 302



Page 302



Page 303



Page 303

New Tria, round
MR16
QRB111
GU10
ES111
GX10
G12
LED



Page 302



Page 302



Page 302



Page 302



Page 303



Page 303

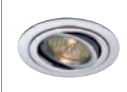
Further recessed luminaires, slewable



Page 350



Page 352



Page 353



Page 350



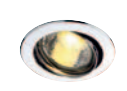
Page 355



Page 354



Page 370



Page 371



Page 366



Page 377



Page 392



Page 392



Page 366



Page 358



Page 380



Page 377



Page 394



Page 356



Page 394



Page 360



Page 360



Page 360



Page 396



Page 355



Page 398



Page 398



Page 398

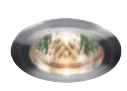


Page 392



Page 320

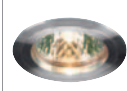
Downlights, rigid construction



Page 350



Page 350



Page 371



Page 355



Page 380



Page 380



Page 377



Page 366



Page 353, 371



Page 380



Page 353



Page 356

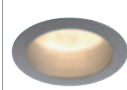
Downlights



Page 343



Page 347



Page 346



Page 395



Page 395



Page 395



Page 395



Page 396



Page 396



Page 347



Page 353



Page 367



Page 376



Page 371



Page 394



Page 376



Page 383



Page 381



Page 385



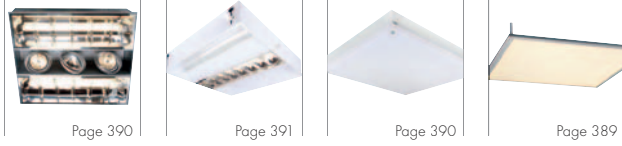
Page 385



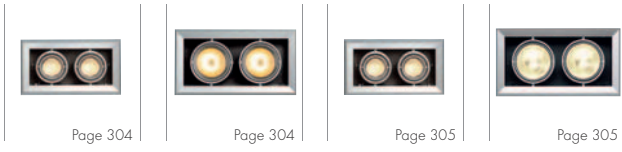
Page 385



Luminaires for grid ceilings



Aixlight®
MOD MR16
MOD QRB111
MOD GU10
MOD ES111



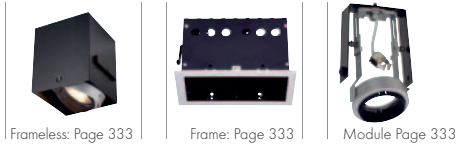
Aixlight® Flat
QRB
ES111



Aixlight® Pro
System
Frame
module



Aixlight® Pro 50
System
Frame
module



Frames



Downunder







NEW TRIA MR16 low-voltage



Material:
Aluminium

Accessory/Included parts:
Transformer (excl.)

Note:
Suitable transformer can be found in the accessory range from page 596 onward.

Recommended bulb:
50W, 40°, 2700K, 1500cd
536540



Article No.	Description	Colour	Voltage	Socket/ Bulb (excl.)	Wattage bulb	Ø in cm	Length in cm	Width in cm	Height in cm	Install. cut-out in cm	Install. depth in cm	Rotation/ Swivel range	Weight
111274	New Tria round MR16	alu brushed	12V AC	G5,3/MR16	50W max.	9,0	-	-	17	Ø 8,0	17,0	350°/45°	0,11 kg
113500	New Tria round MR16	matt white	12V AC	G5,3/MR16	50W max.	9,0	-	-	17	Ø 8,0	17,0	350°/45°	0,11 kg
111351	New Tria 1 MR16	alu brushed	12V AC	G5,3/MR16	50W max.	-	9,0	9,0	13,0	Ø 8,0	13,0	360°/30°	0,15 kg
113501	New Tria 1 MR16	matt white	12V AC	G5,3/MR16	50W max.	-	9,0	9,0	13,0	Ø 8,0	13,0	360°/30°	0,15 kg
111352	New Tria 2 MR16	alu brushed	12V AC	G5,3/MR16	2x 50W max.	-	17,0	9,0	13,0	16,0/8,2	13,0	360°/30°	0,30 kg
111353	New Tria 3 MR16	alu brushed	12V AC	G5,3/MR16	3x 50W max.	-	25,5	9,0	13,0	24,5/8,2	13,0	360°/30°	0,43 kg



NEW TRIA QRB111 low-voltage



Material:
Aluminium

Accessory/Included parts:
Transformer (excl.)

Note:
Suitable transformer can be found in the accessory range from page 596 onward.

Recommended bulb:
75W, 45°, 2700K, 950cd
543745



Article No.	Description	Colour	Voltage	Socket/ Bulb (excl.)	Wattage bulb	Ø in cm	Length in cm	Width in cm	Height in cm	Install. cut-out in cm	Install. depth in cm	Rotation/ Swivel range	Weight
111370	New Tria round QRB111	alu brushed	12V AC	G53/QRB111	75W max.	16,5	-	-	12,5	Ø 15,5	12,5	360°/30°	0,23 kg
113530	New Tria round QRB111	matt white	12V AC	G53/QRB111	75W max.	16,5	-	-	12,5	Ø 15,5	12,5	360°/30°	0,23 kg
111371	New Tria 1 QRB111	alu brushed	12V AC	G53/QRB111	75W max.	-	16,5	16,5	12,5	Ø 15,0	12,5	360°/30°	0,35 kg
113531	New Tria 1 QRB111	matt white	12V AC	G53/QRB111	75W max.	-	16,5	16,5	12,5	Ø 15,0	12,5	360°/30°	0,35 kg
111372	New Tria 2 QRB111	alu brushed	12V AC	G53/QRB111	2x 75W max.	-	31,5	16,5	12,5	29,7/15,5	12,5	360°/30°	0,67 kg
111373	New Tria 3 QRB111	alu brushed	12V AC	G53/QRB111	3x 75W max.	-	46,5	16,5	12,5	45,0/15,5	12,5	360°/30°	0,72 kg



NEW TRIA GU10 high-voltage



Material:
Aluminium

Recommended bulb:
35W EnergySaver ± 50W
20°, 2800K, 1200cd
575370



Article No.	Description	Colour	Voltage	Socket/ Bulb (excl.)	Wattage bulb	Ø in cm	Length in cm	Width in cm	Height in cm	Install. cut-out in cm	Install. depth in cm	Rotation/ Swivel range	Weight
111360	New Tria round GU10	alu brushed	230V AC	GU10/GU10	50W max.	9,0	-	-	17	Ø 8,0	17,0	360°/30°	0,15 kg
113510	New Tria round GU10	matt white	230V AC	GU10/GU10	50W max.	9,0	-	-	17	Ø 8,0	17,0	360°/30°	0,15 kg
111361	New Tria 1 GU10	alu brushed	230V AC	GU10/GU10	50W max.	-	9,0	9,0	12,5	Ø 8,0	17,0	360°/30°	0,2 kg
113511	New Tria 1 GU10	matt white	230V AC	GU10/GU10	50W max.	-	9,0	9,0	12,5	Ø 8,0	17,0	360°/30°	0,2 kg
111362	New Tria 2 GU10	alu brushed	230V AC	GU10/GU10	2x 50W max.	-	17,0	9,0	12,5	16,0/8,2	17,0	360°/30°	0,35 kg
111363	New Tria 3 GU10	alu brushed	230V AC	GU10/GU10	3x 50W max.	-	25,5	9,0	12,5	24,5/8,2	17,0	360°/30°	0,46 kg



NEW TRIA ES111 high-voltage



Material:
Aluminium

Recommended bulb:
75W, 24°, 2700K, 2000cd
575672



Article No.	Description	Colour	Voltage	Socket/ Bulb (excl.)	Wattage bulb	Ø in cm	Length in cm	Width in cm	Height in cm	Install. cut-out in cm	Install. depth in cm	Rotation/ Swivel range	Weight
111380	New Tria round ES111	alu brushed	230V AC	GU10/ES111	75W max.	16,5	-	-	12,5	Ø 15,0	12,5	360°/30°	0,33 kg
113540	New Tria round ES111	matt white	230V AC	GU10/ES111	75W max.	16,5	-	-	12,5	Ø 15,0	12,5	360°/30°	0,33 kg
111381	New Tria 1 ES111	alu brushed	230V AC	GU10/ES111	75W max.	-	16,5	16,5	12,5	Ø 15,0	12,5	360°/30°	0,38 kg
113541	New Tria 1 ES111	matt white	230V AC	GU10/ES111	75W max.	-	16,5	16,5	12,5	Ø 15,0	12,5	360°/30°	0,38 kg
111382	New Tria 2 ES111	alu brushed	230V AC	GU10/ES111	2x 75W max.	-	31,5	16,5	12,5	29,7/15,5	12,5	360°/30°	0,67 kg
111383	New Tria 3 ES111	alu brushed	230V AC	GU10/ES111	3x 75W max.	-	46,5	16,5	12,5	45,0/15,5	12,5	360°/30°	1,04 kg


NEW TRIA LED DISK


Material:
Aluminium

Note:
Equipped with the LED Disk module of Philips: Ra 90; Light flux 800lm

Suitable for cavity ceilings with a material thickness of max. 20 mm

Article No.	Description	Colour	Angle of radiation	Socket/ Bulb (incl.)	Wattage bulb	Ø in cm	Height in cm	Colour temperature
113584	New Tria LED Disk	silver grey	35°	PowerLED module	14,5W	14,1	16,9	2700K
113581	New Tria LED Disk	matt white	35°	PowerLED module	14,5W	14,1	16,9	2700K
113594	New Tria LED Disk	silver grey	60°	PowerLED module	14,5W	14,1	16,9	2700K
113591	New Tria LED Disk	matt white	60°	PowerLED module	14,5W	14,1	16,9	2700K


NEW TRIA GX10 professional lamps for the commercial use


Material:
Aluminium

Note:
Further ballasts can be found in the accessory range on page 595.

Recommended bulb:
35W, 40°, 3000K, 3000cd
507340



Recommended ballast:
Elec. ballast 35W, EEI=A2
470361



Accessory/Included parts:
Electronic ballast (excl.)

Connect. recommendation:
Connection line HV
961062



Article No.	Description	Colour	Voltage	Socket/ Bulb (excl.)	Wattage bulb	Ø in cm	Length in cm	Width in cm	Height in cm	Install. cut-out in cm	Install. depth in cm	Rotation/ Swivel range	Weight
111450	New Tria GX10 round	alu brushed	see E-ballast	GX10/CMH-MR16	20W/35W	9,0	-	-	10,0	Ø 8,0	12,5	360°/45°	0,15 kg
113520	New Tria GX10 round	matt white	see E-ballast	GX10/CMH-MR16	20W/35W	9,0	-	-	10,0	Ø 8,0	12,5	360°/45°	0,15 kg
111451	New Tria GX10 square	alu brushed	see E-ballast	GX10/CMH-MR16	20W/35W	-	9,0	9,0	10,0	Ø 8,0	12,5	360°/45°	0,15 kg
113521	New Tria GX10 square	matt white	see E-ballast	GX10/CMH-MR16	20W/35W	-	9,0	9,0	10,0	Ø 8,0	12,5	360°/45°	0,15 kg


NEW TRIA G12 professional lamps for the commercial use


Material:
Aluminium

Note:
Reflector 38°.
Max. ceiling thickness: 20 mm
Further ballasts can be found in the accessory range on page 595

Recommended bulb:
70W, 3000K, 6600lm
507130



Recommended ballast:
Elec. ballast 70W, EEI=A2
470370



Accessory/Included parts:
Reflector (incl.), ballast (excl.)

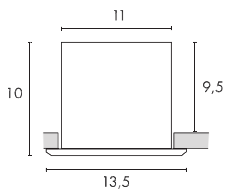
Recommended bulb:
70W, 3000K, 7300lm
507430



Connect. recommendation:
Connection line HV
961062



Article No.	Description	Colour	Voltage	Socket/ Bulb (excl.)	Wattage bulb	Ø in cm	Length in cm	Width in cm	Height in cm	Install. cut-out in cm	Install. depth in cm	Rotation/ Swivel range	Weight
111680	New Tria G12 round	alu brushed	see E-ballast	G12/HQI-T; CDM-T	35W/70W	16,5	-	-	20,0	Ø 15,5	22,0	360°/30°	0,36 kg
111681	New Tria G12 square	alu brushed	see E-ballast	G12/HQI-T; CDM-T	35W/70W	-	16,5	16,5	20,0	Ø 15,5	22,0	360°/30°	0,36 kg



AIXLIGHT® MOD MR16 low-voltage



Material:
Aluminium/steel

Accessory/Included parts:
Transformer (excl.)

Note:
Suitable transformer can be found in the accessory range from page 596 onward.

Recommended bulb:
50W, 40°, 2700K, 1500cd
536540



Article No.	Description	Colour	Voltage	Socket/ Bulb (excl.)	Wattage bulb	Length in cm	Width in cm	Height in cm	Install. cut-out in cm	Install. depth in cm	Rotation/ Swivel range	Weight
154112	Aixlight® Mod 1 MR16	silver grey	12V AC	GU5,3/MR16	50W max.	13,5	13,5	10,0	11,0/11,0	9,5	cardanic	0,40 kg
154122	Aixlight® Mod 2 MR16	silver grey	12V AC	GU5,3/MR16	2x 50W max.	24,0	13,5	10,0	22,0/11,0	9,5	cardanic	0,75 kg
154132	Aixlight® Mod 3 MR16	silver grey	12V AC	GU5,3/MR16	3x 50W max.	35,0	13,5	10,0	32,5/11,0	9,5	cardanic	1,10 kg
154142	Aixlight® Mod 4 MR16	silver grey	12V AC	GU5,3/MR16	4x 50W max.	23,0	23,0	10,0	20,0/20,0	9,5	cardanic	1,75 kg



AIXLIGHT® MOD QRB111 low-voltage



Material:
Aluminium/steel

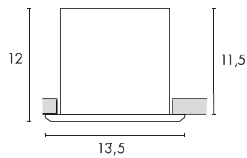
Accessory/Included parts:
Transformer (excl.)

Note:
Suitable transformer can be found in the accessory range from page 596 onward.

Recommended bulb:
50W, 45°, 2700K, 700cd
543545



Article No.	Description	Colour	Voltage	Socket/ Bulb (excl.)	Wattage bulb	Length in cm	Width in cm	Height in cm	Install. cut-out in cm	Install. depth in cm	Rotation/ Swivel range	Weight
154012	Aixlight® Mod 1 QRB111	silver grey	12V AC	G53/QRB111	50W max.	20,5	20,5	10,0	16,5/16,5	9,5	cardanic	0,85 kg
154022	Aixlight® Mod 2 QRB111	silver grey	12V AC	G53/QRB111	2x 50W max.	39,0	20,5	10,0	34,5/17,0	9,5	cardanic	1,76 kg
154032	Aixlight® Mod 3 QRB111	silver grey	12V AC	G53/QRB111	3x 50W max.	52,0	20,5	10,0	49,0/17,0	9,5	cardanic	2,35 kg
154042	Aixlight® Mod 4 QRB111	silver grey	12V AC	G53/QRB111	4x 50W max.	36,0	36,0	10,0	33,0/33,0	9,5	cardanic	3,15 kg

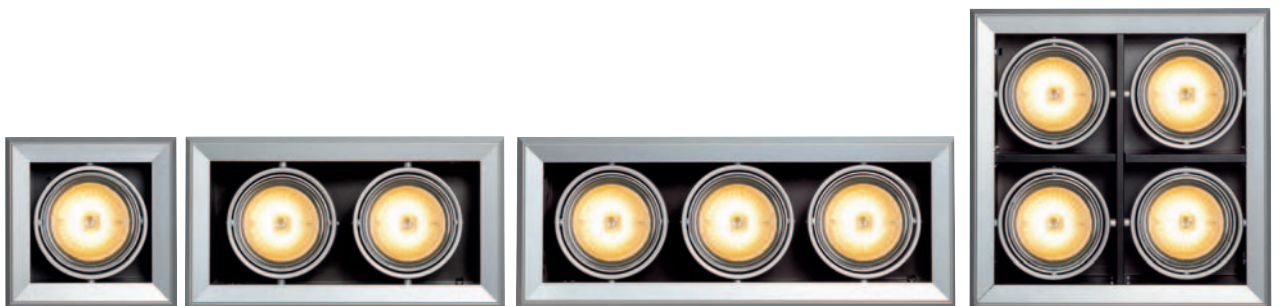

AIXLIGHT® MOD GU10 high-voltage


Material:
Aluminium/steel

Recommended bulb:
35W EnergySaver \approx 50W
20°, 2800K, 1200cd
575370



Article No.	Description	Colour	Voltage	Socket/ Bulb [excl.]	Wattage bulb	Length in cm	Width in cm	Height in cm	Install. cut-out in cm	Install. depth in cm	Rotation/ Swivel range	Weight
154552	Aixlight® Mod 1 GU10	silver grey	230V AC	GU10/GU10	50W max.	13,5	13,5	11,5	11,0/11,0	12,0	cardanic	0,62 kg
154562	Aixlight® Mod 2 GU10	silver grey	230V AC	GU10/GU10	2x 50W max.	28,5	13,5	11,5	26,0/11,0	12,0	cardanic	0,90 kg
154572	Aixlight® Mod 3 GU10	silver grey	230V AC	GU10/GU10	3x 50W max.	40,5	13,5	11,5	38,0/11,0	12,0	cardanic	1,60 kg
154582	Aixlight® Mod 4 GU10	silver grey	230V AC	GU10/GU10	4x 50W max.	23,0	23,0	11,5	20,0/20,0	12,0	cardanic	2,35 kg

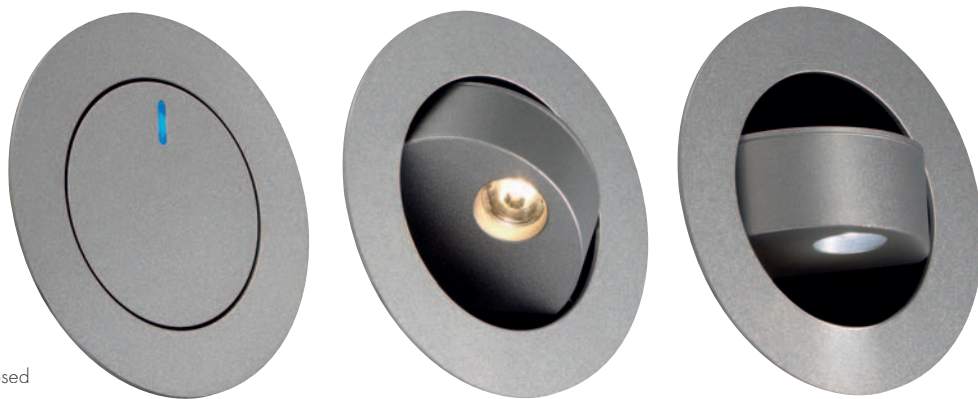

AIXLIGHT® MOD ES111 high-voltage


Material:
Aluminium/steel

Recommended bulb:
75W, 24°, 2700K, 2000cd
575672



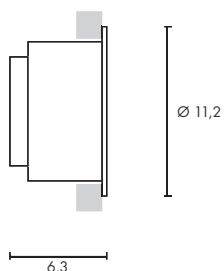
Article No.	Description	Colour	Voltage	Socket/ Bulb [excl.]	Wattage bulb	Length in cm	Width in cm	Height in cm	Install. cut-out in cm	Install. depth in cm	Rotation/ Swivel range	Weight
154052	Aixlight® Mod 1 ES111	silver grey	230V AC	GU10/ES111	75W max.	20,5	20,5	15,0	16,0/16,0	15,0	cardanic	1,05 kg
154062	Aixlight® Mod 2 ES111	silver grey	230V AC	GU10/ES111	2x 75W max.	39,0	20,5	15,0	35,5/17,0	15,0	cardanic	2,20 kg
154072	Aixlight® Mod 3 ES111	silver grey	230V AC	GU10/ES111	3x 75W max.	52,0	20,5	15,0	49,0/17,0	15,0	cardanic	2,85 kg
154082	Aixlight® Mod 4 ES111	silver grey	230V AC	GU10/ES111	4x 75W max.	36,0	36,0	15,0	32,0/32,0	15,0	cardanic	4,65 kg



Integrated orientation light in closed position.

GILALED

700mA



Bulb:
PowerLED (incl.)
3W
and
LED (incl.)
0,06W
Closed current, 10mA

Material:
Aluminium

Dimensions:
Supply line-L: 50 cm

Accessory/Included parts:
LED driver (excl.)

Versions:
silver grey
LED white/blue ▼ 146381
LED warm white/blue ▼ 146382

Art. No.:

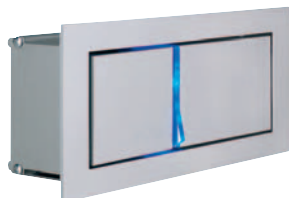
Note:
Integrated orientation light in closed position. Flip function to change the LEDs.
Not suitable for series connection. Therefore only operable with 3W LED driver [464200].

Recommended driver:
LED driver 3W, 700mA
464200



BEDSIDE left/right

700mA



Bulb:
PowerLED (incl.)
3W
and
LED (incl.)
0,06W
Closed current, 10mA

Material:
Aluminium

Dimensions:
W/H/D: 18,5/8,2/5,3 cm

Accessory/Included parts:
Cavity wall fitting clamp (incl.)
LED driver (excl.)

Versions:
silver grey
LED white/blue
left 146244
right 146254

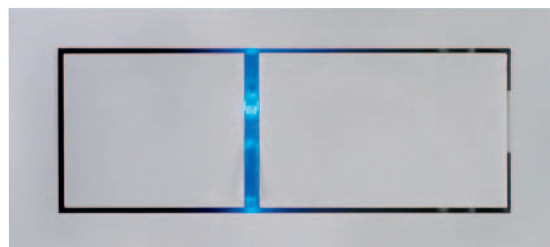
LED warm white/blue
left 146242
right 146252

Art. No.:

Recommended driver:
LED driver 3W, 700mA
464200



The main LED is switched on with the push-lock-system.
Integrated blue LED light in closed position.
The blue orientation light can be switched-off completely via a switch on the back side before mounting the lamp.
One driver is needed for each lamp!



Bedside left

ACCESSORY for Bedside

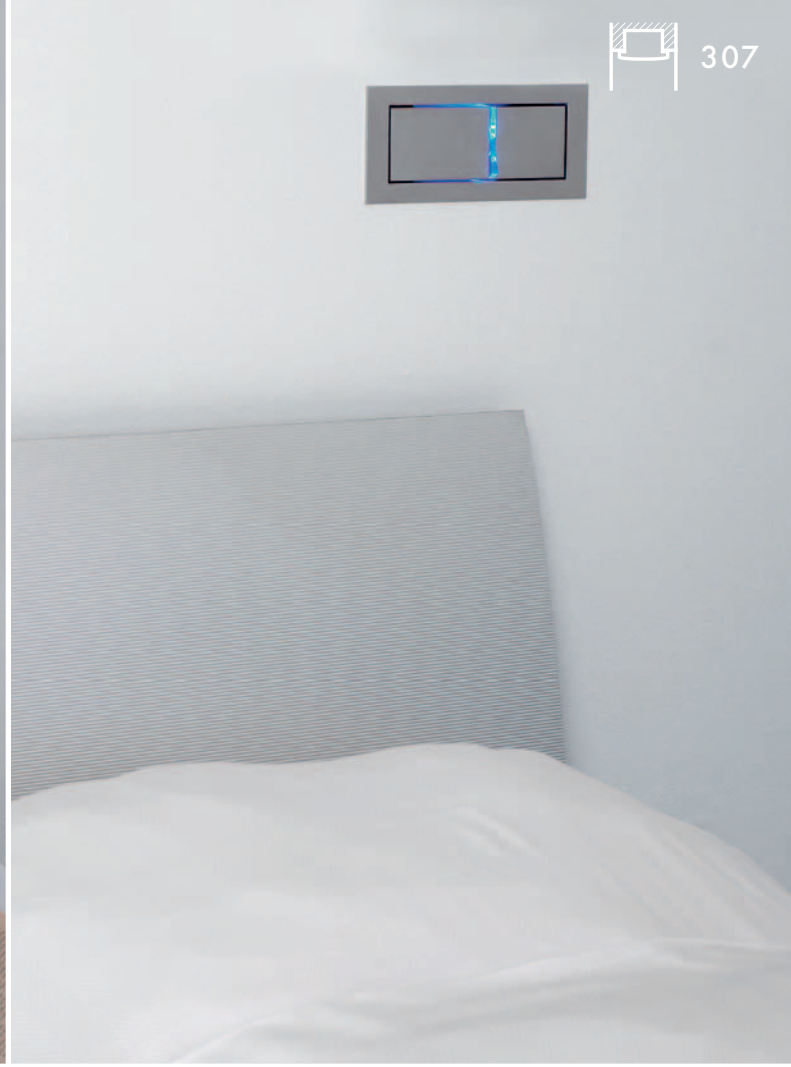


Flush-mounted box Art. No.:
W/H/D: 173/13/8 cm 146260

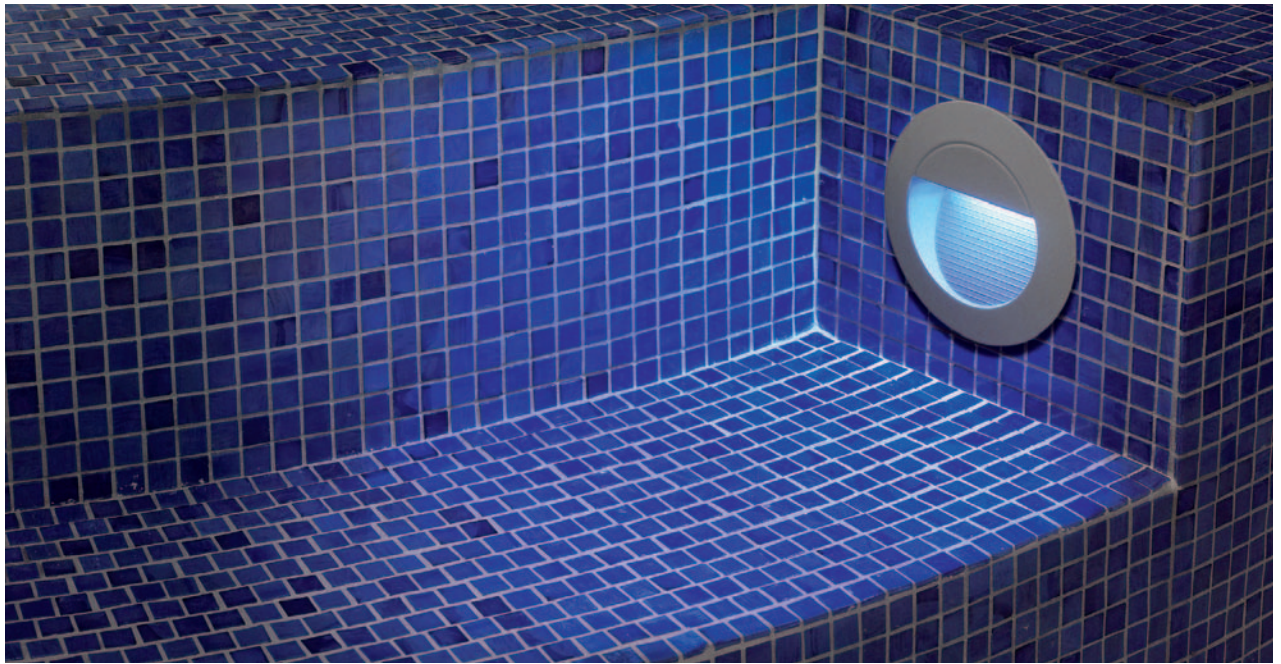
For mounting the Bedside in masonry walls.



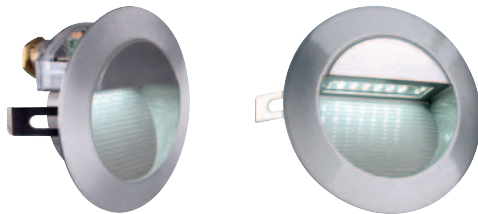
Bedside right







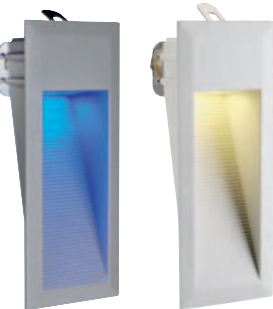
DOWNUNDER LED 14

230~  14 pce.   11,5  7,2  max. 10  0,25 IP44 **Bulb:**
SMD LED (incl.)
0,8W total**Material:**
Aluminium**Dimensions:**
Ø/D: 12,5/6 cm
Flush-mounted box-Ø/D: 12/7,2 cm**Versions:**
stone grey
LED white
LED warm white
LED bluealu brushed
LED white
LED warm white**Art. No.:**230201
230202
230207230301
230302

For application in damp rooms and outdoor areas, the lamp must be mounted with the light emission downwards! Flush-mounted box for the use in masonry walls.

Accessory/Included parts:
Flush-mounted box (incl.)

DOWNUNDER LED 15

230~  15 pce.   7,5/21  10  max. 10  0,45 IP44 **Bulb:**
SMD LED (incl.)
0,9W total**Material:**
Aluminium**Dimensions:**
W/H/D: 9/23/7,5 cm
Flush-mounted box-W/H/D:
9,5/23,5/9 cm**Versions:**
stone grey
LED white
LED warm white
LED bluealu brushed
LED white
LED warm whitewhite
LED warm white**Art. No.:**230211
230212
230217230311
230312

230182

Note:
IP44 only with light emission downwards!
Flush-mounted box for the use in masonry walls.

Accessory/Included parts:
Flush-mounted box (incl.)

DOWNUNDER LED 27

230~  27 pce.   16,5/21  10  max. 10  0,75 IP44 **Bulb:**
SMD LED (incl.)
1,8W total**Material:**
Aluminium**Dimensions:**
W/H/D: 18/23/7,5 cm
Flush-mounted box-W/H/D:
18,5/23,5/9 cm**Note:**

For application in damp rooms and outdoor areas, the lamp must be mounted with the light emission downwards! Flush-mounted box for the use in masonry walls.

Versions:
stone grey
LED white
LED warm whitewhite
LED warm white**Art. No.:**230221
230222

230192

Accessory/Included parts:
Flush-mounted box (incl.)




LED DOWNUNDER MINI

350mA



1 pce.



4,5/12,5



5



40°



0,12


Bulb:
 PowerLED (incl.)
 1W

Material:
 Aluminium

Dimensions:
 W/H/D: 6/14/4,8 cm

Accessory/Included parts:
 LED driver (excl.)

Versions:
 silver grey
 LED white
 LED warm white

 white
 LED warm white

Art. No.:
 152071
 152072

152070

Recommended driver:
 LED driver 3W, 350mA
 464108


When connecting several lamps, please take care of a series connection!

DOWNUNDER RCL 101

24=



10 pce.



11,4/5,4



4,5



0,23


Bulb:
 SMD LED (incl.)
 2W total

Material:
 Aluminium/stainless steel 304

Dimensions:
 W/H/D: 12,5/6,5/4,7 cm

Accessory/Included parts:
 Power unit (excl.)

Versions:
 stainless steel brushed
 LED white
 LED warm white

Art. No.:
 152061
 152062

Recommended power unit:
 LED Power unit 12W, 24V=
 470502

 Suitable for cavity walls with a material thickness of max. 15mm.
 When connecting several lamps, please pay attention to the total wattage!
 Further power units can be found in the accessory range from page 594
 onward.

ACCESSORY for LED Downunder Mini

Installation frame
 steel galvanized
 L/W: 20/12 cm

Art. No.:
 152079

ACCESSORY for Downunder RCL 101

Flush-mounted frame
 steel galvanized
 L/W: 20/12 cm

Art. No.:
 925201



DOWNUNDER 05



Socket/Bulb:
GY6,35/pin socket (excl.)
50W max.

Material:
Aluminium

Dimensions:
Outer-W/H: 8/15,5 cm
Rear housing-W/H/D: 19,5/7/7 cm

Accessory/Included parts:
Transformer (excl.)

Versions:
alu natural

Flush-mounted frame
for Downunder 05 925195

Recommended bulb:
50W, 2700K, 900lm
512250



DOWNUNDER 1



Socket/Bulb:
GY6,35/pin socket (excl.)
50W max.

Material:
Aluminium

Dimensions:
Outer-W/H: 12/15,5 cm
Rear housing-W/H/D:
10,5/19,3/7,2 cm

Accessory/Included parts:
Transformer (excl.)

Versions:
alu natural

Flush-mounted frame
for Downunder 1 925200

Recommended bulb:
50W, 2700K, 900lm
512250



RECOMMENDED TRANSFORMER for Downunder 05 and Downunder 1



FN Mini transformer 1
10-60 VA Art. No.:
461060



FN Mini transformer 2
10-60 VA Art. No.:
461062

When connecting several lamps, please pay attention to the total wattage! Further transformers can be found in the accessory range from page 598 onward.

DOWNUNDER 2



Socket/Bulb:
G24d-1/
TC-D EnergySaver 2-pin (excl.)
13W

Material:
Aluminium

Dimensions:
Outer-W/H: 22,1/30,5 cm
Rear housing-W/H/D: 20/38,5/9 cm

Accessory/Included parts:
Low-loss ballast (incl.)

Versions:
alu natural

Flush-mounted frame
for Downunder 2 925250

Recommended bulb:
13W, 900lm, EEK=A
2700K 508213
4000K 508313



DOWNUNDER 3



Socket/Bulb:
R7s/R7s, 118 mm (excl.)
100W max.

Material:
Aluminium

Dimensions:
Outer-W/H: 22,1/30,5 cm
Rear box-W/H/D: 20/36/9 cm

Versions:
alu natural

Flush-mounted frame
for Downunder 3 925250

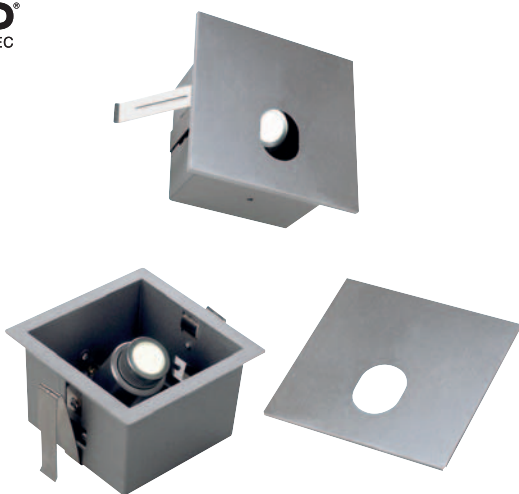
Recommended bulb:
100W EnergySaver \approx 150W
2700K, 1900lm, EEK=C
519221






FOK LED Design by CDC

350mA 1 pce. 90° 7,5/7,5 6 0,2


Bulb:
PowerLED (incl.)
1W

Material:
Aluminium

Dimensions:
W/H/D: 9/9/6 cm
Supply line-L: 44,5 cm

Accessory/Included parts:
Mini-plug (incl.)
LED driver (excl.)

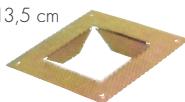
Note:
The light beam is focusable by
removing the front cover!

Versions:
alu brushed
LED white
LED warm white

Art. No.:
112801
112802

When connecting several Fok LED lamps, please take care of a series connection! Please pay attention to the total wattage!
Further drivers can be found in the accessory range from page 592 onward.

ACCESSORY for Fok LED
Flush-mounted box
W/H/D:
8,4/12,3/6,7 cm
112781

Flush-mounted frame
W/H: 13,5/13,5 cm
112780

Connector strip
111850

LED driver 3W, 350mA
464108


**MINI FRAME LED** Design by CDC

Operate only with conventional transformer.
When connecting several lamps, please pay attention to the total wattage!
Further transformers can be found in the accessory range from page 596 onward.

Bulb:
LED (incl.)
0,3W total

Material:
Plastic/glass

Dimensions:
W/H/D: 4/4/5 cm

Accessory/Included parts:
Conventional transformer (excl.)

Versions:
silver grey
LED white
LED warm white
LED blue

Art. No.:
112711
112712
112717

Recommended transformer:
Conv. transformer, 10VA, 12V~
451010

**SLOT LED**

IP44 is only ensured with light emission downwards.



Bulb:
230V, PowerLED (incl.)
3,3W

Material:
Aluminium

Dimensions:
L/W: 10/10 cm

Accessory/Included parts:
Flush-mounted box (incl.)

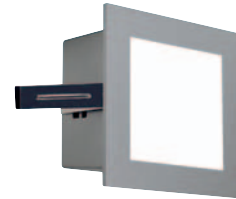
Versions:
silver grey
LED white
LED warm white

Art. No.:
231001
231002



Art. No.: 111292

FRAME CURVE LED Design by CDC**Material:**
Aluminium**Dimensions:**
Supply line-L: 30 cm**Accessory/Included parts:**
Mini-plug (incl.)
LED driver (excl.)**Note:**
Operate only with suitable
LED driver/350mA

When connecting several lamps,
please pay attention to the total
wattage!
Further drivers can be found in the
accessory range from page 592
onward.

Art. No.: 111261

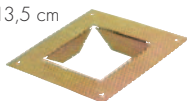
FRAME BASIC LED Design by CDC**Material:**
Aluminium/glass**Dimensions:**
Supply line-L: 45 cm**Accessory/Included parts:**
Mini-plug (incl.)
LED driver (excl.)**Note:**
Operate only with suitable
LED driver/350mA

When connecting several lamps,
please pay attention to the total
wattage!
Further drivers can be found in the
accessory range from page 592
onward.**FRAME LED** Design by CDC

350mA



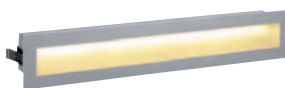
Article No.	Description	Colour	Current	Wattage	Number/Type LEDs	Width in cm	Height in cm	Depth in cm	Install. cut-out in cm	Install. depth in cm	Weight
111291	Frame Curve LED	LED white	350 mA	1 W	1 PowerLED	9,0	9,0	3,8	7,5/7,5	4,5	0,11 kg
111292	Frame Curve LED	LED warm white	350 mA	1 W	1 PowerLED	9,0	9,0	3,8	7,5/7,5	4,5	0,11 kg
111297	Frame Curve LED	LED blue	350 mA	1 W	1 PowerLED	9,0	9,0	3,8	7,5/7,5	4,5	0,11 kg
111261	Frame Basic LED	LED white	350 mA	1 W	1 PowerLED	9,0	9,0	5,5	7,5/7,5	6,0	0,2 kg
111262	Frame Basic LED	LED warm white	350 mA	1 W	1 PowerLED	9,0	9,0	5,5	7,5/7,5	6,0	0,2 kg

ACCESSORY for Frame Curve LED and Frame Basic LED**Flush-mounted box**
W/H/D:
8,4/12,3/6,7 cm
112781**Flush-mounted frame**
W/H: 13,5/13,5 cm
112780**Connector strip**
3 outlets
111850Connector strip with
6 outlets see page 593**LED driver 3W, 350mA**
464108




GLENOS LED Design by CDC

24=



Bulb:
LED (incl.)
3W total

Material:
Aluminium/glass

Dimensions:
W/H/D: 33,4/6/6,3 cm
Flush-mounted frame:
W/H/D: 40/12,3/2,5 cm
Installation dimensions: 33/4,8 cm

Accessory/Included parts:
Diffuser (incl.)
Power unit (excl.)

Versions:
silver grey
LED white
LED warm white

Art. No.:
112811
112812

Flush-mounted frame:
For the installation of the Glenos LED
in masonry walls.
silver grey 112810

Recommended power unit:
LED power unit 12V, 24V=
470502


GLENOS LED XL

24=



Suitable for cavity walls and ceilings
with a material thickness of 5-20 mm.

Bulb:
LED (incl.)
7,5W total

Material:
Aluminium/acrylic

Dimensions:
W/H/D: 99/5,8/5 cm

Accessory/Included parts:
Diffuser (incl.)
Power unit (excl.)

Versions:
silver grey
LED white
LED warm white

Art. No.:
112821
112822

Recommended power unit:
LED power unit 12V, 24V=
470502





LED SLIM LIGHT recessed

12~



Bulb:
SMD LED (incl.)
0,5W total

Material:
Aluminium/artificial resin

Dimensions:
Cover-Ø/H: 5,5/1 cm
Supply line-L: 2 m

Versions:
alu anodized
LED white
LED warm white

Art. No.:
550671
550672

Recommended transformer:
IP44 conv. transformer, 10VA, 12V~
451010



Can be walked on! Mounting is only possible in solid materials like wood, parquet or laminate with clear-cut borehole. Operate only with conventional transformer!

Accessory/Included parts:
Conventional transformer (excl.)





KALU RECESSED 1 Design by CDC



Series: page 042, 125, 127



Socket/Bulb:
G53/QRB111 (excl.)
50W max.

Material:
Aluminium

Dimensions:
L/W/H: 15/9/15 cm
Max. ceiling thickness: 2,5 cm

Accessory/Included parts:
Transformer (excl.)

Versions:
alu brushed

Art. No.:
113406

Recommended bulb:
50W, 45°, 2700K, 700cd
543545



Recommended transformer:
FN Elec. transformer 01
20-60VA
461067



KALU RECESSED 2 Design by CDC



Series: page 042, 125, 127



Socket/Bulb:
G53/QRB111 (excl.)
2x 50W max.

Material:
Aluminium

Dimensions:
L/W/H: 30/9/15 cm
Max. ceiling thickness: 2,5 cm

Accessory/Included parts:
Transformer (excl.)

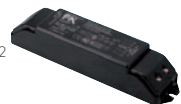
Versions:
alu brushed

Art. No.:
113416

Recommended bulb:
50W, 45°, 2700K, 700cd
543545



Recommended transformer:
FN E-transformer 02
20-105VA
461107



KALU RECESSED 3 Design by CDC



Series: page 042, 125, 127



Socket/Bulb:
G53/QRB111 (excl.)
3x 50W max.

Material:
Aluminium

Dimensions:
L/W/H: 45/9/15 cm
Max. ceiling thickness: 2,5 cm

Accessory/Included parts:
Transformer (excl.)

Versions:
alu brushed

Art. No.:
113426

Recommended bulb:
50W, 45°, 2700K, 700cd
543545



Recommended transformer:
FN E-transformer 03
50-150VA
461157







AIXLIGHT® FLAT



Art. No.: 154622



Art. No.: 154632



Art. No.: 154602



Art. No.: 154612

AIXLIGHT® FLAT QRB111

Socket/Bulb:
G53/QRB111 (excl.)
50W max.

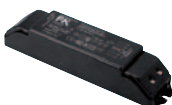
Recommended bulb:
50W, 45°, 2700K, 700cd
543545



Material:
Steel

Accessory/Included parts:
Transformer (excl.)

Recommended transformer:
FN E-transformer 02
20-105VA
461107



AIXLIGHT® FLAT ES111

Socket/Bulb:
GU10/ES111 (excl.)
75W max.

Recommended bulb:
75W, 24°, 2700K, 2000cd
575672



Material:
Steel



AIXLIGHT® FLAT

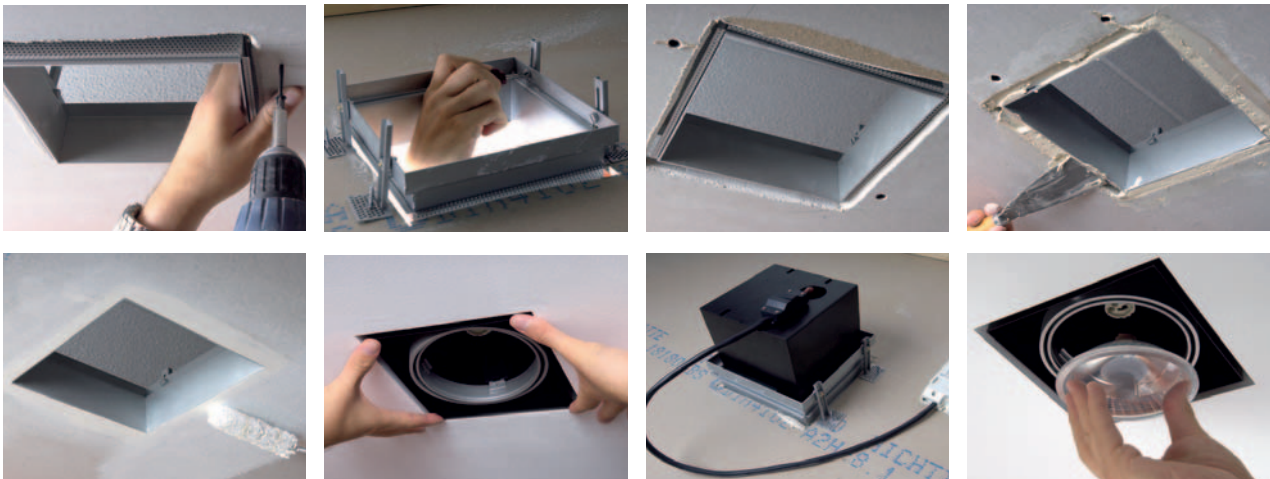


Article No.	Description	Colour	Voltage	Wattage bulb	Length in cm	Width in cm	Height in cm	Install. cut-out in cm	Install. depth in cm	Material thickness install. surface in mm	Protection class	Weight
154622	Aixlight® Flat Single QRB111	chrome/matt black	12V AC	50W	20,5	20,5	9,5	170/170	9,5	10 - 24	3	0,95 kg
154632	Aixlight® Flat Double QRB111	chrome/matt black	12V AC	2x 50W	39,0	21,0	9,5	35,5/18,0	9,5	5,0 - 24	3	1,80 kg
154602	Aixlight® Flat Single ES111	chrome/matt black	230V AC	75W	20,5	20,5	15,0	170/170	15,0	10 - 24	1	1,25 kg
154612	Aixlight® Flat Double ES111	chrome/matt black	230V AC	2x 75W	39,0	21,0	15,5	35,5/18,0	15,0	5,0 - 24	1	2,25 kg





AIXLIGHT® PRO



THE AIXLIGHT® PRO RECESSED CEILING SYSTEM 6 steps to an individual lighting solution.

1. Select an installation frame in the desired size / design / height with or without decoration cover.



4. For some modules a structure glass is optionally available.



2. Select the desired lamp module...



5. Select the operating units, suitable to the wattage of the bulb.



3. ... and the corresponding bulb.



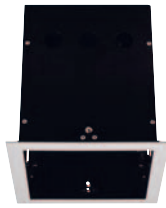
6. If you decided to use the E27, Britespot ES111 or the G12 module, you need a suitable high-voltage connection line.







AIXLIGHT® PRO FRAME



Art. No.: 115104



Art. No.: 115114



Art. No.: 115124

AIXLIGHT® PRO FRAME installation frame Design by CDC



Material:
Steel

Note:

Professional, modular recessed ceiling system for cavity ceilings with a material thickness of 8-29 mm. Suitable for all Aixlight® Pro modules.

Article No.	Description	Colour	Length in cm	Width in cm	Height in cm	Install. cut-out in cm	Install. depth in cm	Material thickness install. surface	Weight
115104	Aixlight® Pro 1 Frame	silver grey/black	17,5	17,5	19,0	15,5/15,5	21,0	8,0 - 29,0 mm	1,00 kg
115114	Aixlight® Pro 2 Frame	silver grey/black	31,5	17,5	19,0	29,5/15,5	21,0	8,0 - 29,0 mm	1,45 kg
115124	Aixlight® Pro 3 Frame	silver grey/black	45,5	17,5	19,0	43,5/15,5	21,0	8,0 - 29,0 mm	1,82 kg

The complete lamp module range for the Aixlight® Pro series can be found on pages 330-331.



AIXLIGHT® PRO T5 FRAME Design by CDC

230~



EEI=A2



88,5/15,5



18



3,5



Socket/Bulb:
G5/D5 EnergySaver (excl.)
2x 39W

Material:
Steel/acrylic

Dimensions:
L/W/H: 91,3/17,5/15,8 cm

Accessory/Included parts:
Electronic ballast (incl.)

Versions:
silver grey/black

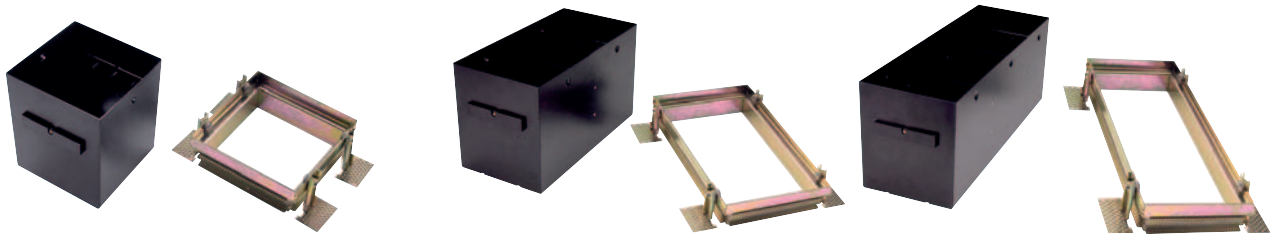
Art. No.: 115204

Recommended bulb:
39W, 3000K, 3220lm
548039

(PU see page 617)

Suitable for cavity ceilings with a material thickness of 8-29 mm.

AIXLIGHT® PRO FRAMELESS



Art. No.: 115151

Art. No.: 115152

Art. No.: 115153

AIXLIGHT® PRO FRAMELESS installation frame Design by CDC



Material:
Steel

Accessory/Included parts:
Installation frame (incl.)

Note:
Professional, modular recessed ceiling system for cavity ceilings with a material thickness up to max. 20 mm. Suitable for all Aixlight® Pro modules.

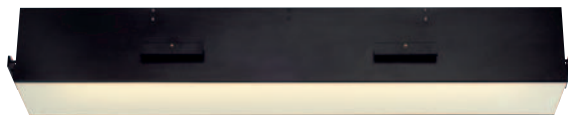
Article No.	Description	Colour	Length in cm	Width in cm	Height in cm	Install. cut-out in cm	Install. depth in cm	Material thickness install. surface	Weight
115151	Aixlight® Pro 1 Frameless	black	15,5	15,5	18,5	19,0/19,0	23,0	max. 20,0 mm	2,15 kg
115152	Aixlight® Pro 2 Frameless	black	31,5	15,5	18,5	35,0/19,0	23,0	max 20,0 mm	3,50 kg
115153	Aixlight® Pro 3 Frameless	black	46,5	15,5	18,5	50,0/19,0	23,0	max 20,0 mm	4,80 kg

The complete lamp module range for the Aixlight® Pro series can be found on pages 330-331.



AIXLIGHT® PRO T5 FRAMELESS Design by CDC

230~



Socket/Bulb:
G5/D5 EnergySaver (excl.)
2x 39W

Material:
Steel/acrylic

Dimensions:
L/W/D: 88,5/15,5/15,5 cm

Accessory/Included parts:
Electronic ballast (incl.)
Installation frame (incl.)

Versions:
black

Art. No.:
115250

Recommended bulb:
39W, 3000K, 3220lm
548039

(PU see page 617)

Suitable for cavity ceilings with a material thickness up to max. 20 mm.



AIXLIGHT® PRO ROUND, HIGH CONSTRUCTION



Art. No.: 115641



Art. No.: 115644



Art. No.: 115651



Art. No.: 115654

AIXLIGHT® PRO FRAME ROUND installation frame Design by CDC



Material:
Steel

Note:
Professional, modular recessed ceiling system for cavity ceilings with a material thickness up to max. 35 mm. Suitable for all Aixlight® Pro modules. (further information see pages 330-331).

Article No.	Description	Colour	Ø in cm	Length in cm	Width in cm	Height in cm	Install. cut-out in cm	Install. depth in cm	Material thickness install. surface	Weight
115641	Aixlight® Pro 1 Frame Round	matt white/black	Ø 17,5	-	-	18,5	Ø 15,5	20,0	8,0 - 35,0 mm	0,85 kg
115644	Aixlight® Pro 1 Frame Round	silver grey/black	Ø 17,5	-	-	18,5	Ø 15,5	20,0	8,0 - 35,0 mm	0,85 kg
115651	Aixlight® Pro 2 Frame Round	matt white/black	-	35,0	17,5	18,5	33,0/15,5	20,0	8,0 - 35,0 mm	1,50 kg
115654	Aixlight® Pro 2 Frame Round	silver grey/black	-	35,0	17,5	18,5	33,0/15,5	20,0	8,0 - 35,0 mm	1,50 kg



Art. No.: 115674



Art. No.: 115684

AIXLIGHT® PRO FRAMELESS ROUND installation frame Design by CDC



Material:
Steel

Accessory/Included parts:
Installation frame (incl.)

Note:
Professional, modular recessed ceiling system for cavity ceilings with a material thickness up to max. 25 mm. Suitable for all Aixlight® Pro modules (further information see pages 330-331).

Article No.	Description	Colour	Ø in cm	Length in cm	Width in cm	Height in cm	Install. cut-out in cm	Install. depth in cm	Material thickness install. surface	Weight
115674	Aixlight® Pro 1 Frameless Round	black	15,5	-	-	18,0	Ø 19,0	20,0	max. 25,0 mm	1,1 kg
115684	Aixlight® Pro 2 Frameless Round	black	-	32,5	15,5	18,0	36,0/19,0	20,0	max. 25,0 mm	2,7 kg



Application example:
Aixlight® Pro 2 Frameless round (115674)
with two QRB modules silver grey (115004)
(bulb excl.)



Application example:
Aixlight® Pro 2 Frame Round (115651)
with one QRB module white (115001)
and one QRB module Move white (115071)
(bulb excl.)



AIXLIGHT® PRO ROUND, FLAT CONSTRUCTION



Art. No.: 115601



Art. No.: 115604



Art. No.: 115611



Art. No.: 115614

AIXLIGHT® PRO FLAT FRAME ROUND installation frame Design by CDC



Material:
Steel

Note

The Aixlight® Pro variant for low installation depth. For cavity ceilings with a material thickness up to max. 35 mm. Only suitable with the below-mentioned bulb modules (details see pages 330-331).

Article No.	Description	Colour	Ø in cm	Length in cm	Width in cm	Height in cm	Install. cut-out in cm	Install. depth in cm	Material thickness install. surface	Weight
115601	Aixlight® Pro 1 Flat Frame Round	matt white/black	Ø 17,5	-	-	12,5	Ø 16,0	14,0	8,0 - 35,0 mm	0,5 kg
115604	Aixlight® Pro 1 Flat Frame Round	silver grey/black	Ø 17,5	-	-	12,5	Ø 16,0	14,0	8,0 - 35,0 mm	0,5 kg
115611	Aixlight® Pro 2 Flat Frame Round	matt white/black	-	35,0	17,5	12,5	33,0/15,5	14,0	8,0 - 35,0 mm	1,11 kg
115614	Aixlight® Pro 2 Flat Frame Round	silver grey/black	-	35,0	17,5	12,5	33,0/15,5	14,0	8,0 - 35,0 mm	1,11 kg



Art. No.: 115624



Art. No.: 115634

AIXLIGHT® PRO FLAT FRAMELESS ROUND installation frame Design by CDC



Material:
Steel

Accessory/Included parts:
Installation frame (incl.)

Note:

The Aixlight® Pro variant for low installation depth. For cavity ceilings with a material thickness up to max. 25 mm. Only suitable with the below-mentioned bulb modules (details see pages 330-331).

Article No.	Description	Colour	Ø in cm	Length in cm	Width in cm	Height in cm	Install. cut-out in cm	Install. depth in cm	Material thickness install. surface	Weight
115624	Aixlight® Pro 1 Flat Frameless Round	black	15,5	-	-	12,0	Ø 19,0	14,0	25,0 mm	0,78 kg
115634	Aixlight® Pro 2 Flat Frameless Round	black	-	32,5	15,5	12,0	36,0/19,0	14,0	25,0 mm	1,72 kg

Suitable LAMP MODULES for Flat installation frame



Article No.	Description	Colour	Voltage	Socket/ Bulb (excl.)	Wattage bulb	Ø in cm	Height in cm	Rotation/ Swivel range	Weight	Protection class
115001	QRB module	matt white	12V AC	G53/QRB111	75W max.	13,5	6,0	cardanic	0,22 kg	3
115004	QRB module	silver grey/black	12V AC	G53/QRB111	75W max.	13,5	6,0	cardanic	0,22 kg	3
115011	ES111 module	matt white	230V AC	GU10/ES111	75W max.	13,5	11,5	cardanic	0,31 kg	1
115014	ES111 module	silver grey/black	230V AC	GU10/ES111	75W max.	13,5	11,5	cardanic	0,31 kg	1

The complete lamp module range for the Aixlight® Pro series can be found on pages 330-331.



AIXLIGHT® PRO LAMP MODULES



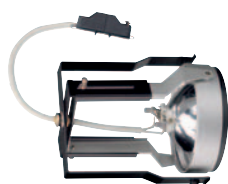
Art. No.: 115004

QRB MODULE

Material:
Aluminium/plastic

Accessory/Included parts:
Transformer (excl.)

Recommended bulb:
50W EnergySaver \approx 75W
545752, 24°, 3000K, 5800cd
545753, 40°, 3000K, 2000cd



Art. No.: 115074

Design by CDC
QRB MODULE MOVE

Material:
Aluminium/plastic

Accessory/Included parts:
Transformer (excl.)

Note:
Not suitable for flat installation frames. Module can be pulled 5,5 cm out of the housing.



Art. No.: 115014

ES111 MODULE

Material:
Aluminium/plastic



Art. No.: 115034

E27 MODULE

Material:
Aluminium/plastic

Note:
Not suitable for flat installation frames.

Recommended bulb:
75W, 45°, 2700K, 950cd
543745



Recommended bulb:
50W EnergySaver \approx 75W
545752, 24°, 3000K, 5800cd
545753, 40°, 3000K, 2000cd



Recommended bulb:
75W, 24°, 2700K, 2000cd
575672



Recommended bulb:
75W, 24°, 7000cd
519737



HiEFFICIENT
PROfilight.

HiEFFICIENT
PROfilight.



LED
LEDTEC



Art. No.: 115024

BRITESPOT ES111 MODULE

Material:
Aluminium/plastic

Accessory/Included parts:
Electronic ballast (excl.)

Note:
Not suitable for flat installation frames.
Suitable ballast and high-voltage connection line see page 595.

Recommended bulb:
70W, 3000K, 2000cd
506982



Art. No.: 115044

G12 MODULE

Material:
Aluminium/plastic

Accessory/Included parts:
Ballast (excl.)

Note:
Not suitable for flat installation frames.
Suitable ballast and high-voltage connection line see page 595.

Recommended bulb:
70W, 3000K, 6600lm
507130



Art. No.: 115094

Design by CDC
ENERGY SAVER MODULE

Material:
Aluminium/plastic

Note:
Not suitable for flat installation frames.
Suitable for bulbs with the dimensions up to max. \varnothing /L: 5,3/14,0 cm.

Recommended bulb:
15W, 2700K, 800lm, EEK=A
508960



Art. No.: 115451

Design by CDC
LED Disk MODULE

Material:
Aluminium/plastic

Angle of radiation:
50°

Note:
Not suitable for flat installation frames.
Equipped with the LED Disk module of Philips: Ra 90, 800lm, 2700K

Recommended bulb:
23W, 2700K, 1350lm, EEK=A
508970





LAMP MODULES for Aixlight® Pro installation frame



Article No.	Description	Colour	Voltage	Socket/ Bulb (excl.)	Wattage Bulb	Ø in cm	Height in cm	Rotation/ Swivel range	Weight	Protection class
115001	QRB module	matt white	12V AC	G53/QRB111	75W max.	13,5	6,0	cardanic	0,22 kg	3
115004	QRB module	silver grey/black	12V AC	G53/QRB111	75W max.	13,5	6,0	cardanic	0,22 kg	3
115071	QRB module Move	matt white	12V AC	G53/QRB111	75W max.	13,5	170-22,5	180°/90°	0,42 kg	3
115074	QRB module Move	silver grey/black	12V AC	G53/QRB111	75W max.	13,5	170-22,5	180°/90°	0,42 kg	3
115011	ES111 module	matt white	230V AC	GU10/ES111	75W max.	13,5	11,5	cardanic	0,31 kg	1
115014	ES111 module	silver grey/black	230V AC	GU10/ES111	75W max.	13,5	11,5	cardanic	0,31 kg	1
115034	E27 module	silver grey/black	230V AC	E27/PAR30	75W max.	13,5	170	cardanic	0,46 kg	1
115024 ▼	Britespot ES111 module	silver grey/black	see E-ballast	GX10/Britespot ES111	35W/70W	13,5	11,5	cardanic	0,31 kg	1
115044	G12 module 24°	silver grey/black	see E-ballast	G12/CDM-T; HQI-T	35W/70W	13,5	15,0	cardanic	0,37 kg	1
115054	G12 module 58°	silver grey/black	see E-ballast	G12/CDM-T; HQI-T	35W/70W	13,5	15,0	cardanic	0,37 kg	1
115064	G12 module 8°	silver grey/black	see E-ballast	G12/CDM-T; HQI-T	35W/70W	13,5	15,0	cardanic	0,37 kg	1
115094	EnergySaver module	silver grey/black	230V AC	E27/EnergySaver	21W	13,5	18,0	cardanic	0,43 kg	1
115451	LED Disk module	matt white	230V AC	1 PowerLED (incl.)	14,5W	13,5	17,5	cardanic	0,74 kg	1
115454	LED Disk module	silver grey/black	230V AC	1 PowerLED (incl.)	14,5W	13,5	17,5	cardanic	0,74 kg	1

ACCESSORY for Aixlight® Pro lamp modules

Structure glass
Not suitable for QRB and
LED Disk modules
115170



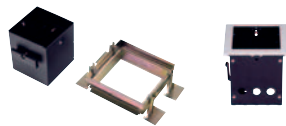
Aluminium decoration cover
Matt white, to exchange the black
standard cover.
115600





THE AIXLIGHT® PRO 50 RECESSED CEILING SYSTEM 5 steps to an individual lighting solution

1. Select an installation frame with the desired size with or without decoration cover.



4. Select the operating units, suitable to the wattage of the bulb.



2. Select the desired lamp module...



5. If you decided to use the GX10 module, you need a suitable high-voltage connection line.



3. ... and the corresponding bulb.

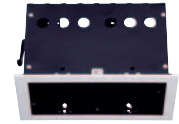




AIXLIGHT® PRO 50 FRAME



Art. No.: 115304



Art. No.: 115314

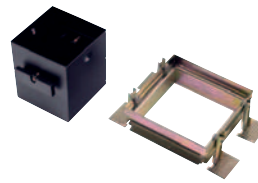
AIXLIGHT® PRO 50 FRAME installation frame Design by CDC



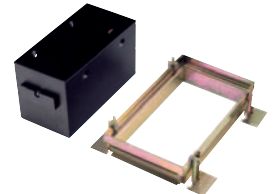
Material:
Steel

Note:
Professional, modular recessed ceiling system for cavity ceilings with a material thickness of 8-25 mm.
Suitable for all Aixlight® Pro 50 modules (see below).

Article No.	Description	Colour	Length in cm	Width in cm	Height in cm	Install. cut-out in cm	Install. depth in cm	Material thickness install. surface in mm	Weight
115304	Aixlight® Pro 50 1 Frame	silver grey/black	10,0	10,0	10,0	8,5/8,5	13,0	8,0 - 25 mm	0,33 kg
115314	Aixlight® Pro 50 2 Frame	silver grey/black	17,3	10,0	10,0	16,0/8,5	13,0	8,0 - 25 mm	0,45 kg



Art. No.: 115351



Art. No.: 115352

AIXLIGHT® PRO 50 FRAMELESS installation frame Design by CDC



Material:
Steel

Accessory/Included parts:
Installation frame (incl.)

Note:
Professional, modular recessed ceiling system for cavity ceilings with a material thickness up to max. 18 mm.
Suitable for all Aixlight® Pro 50 modules (see below).

Article No.	Description	Colour	Length in cm	Width in cm	Height in cm	Install. cut-out in cm	Install. depth in cm	Material thickness install. surface in mm	Weight
115351	Aixlight® Pro 50 1 Frameless	black	10,2	10,2	10,5	12,5/12,5	13,0	max. 18 mm	0,77 kg
115352	Aixlight® Pro 50 2 Frameless	black	18,8	10,2	10,5	21,0/12,5	13,0	max. 18 mm	1,09 kg



Art. No.: 115404

MR16 MODULE

Material:
Aluminium/plastic

Accessory/Included parts:
Transformer (excl.)

Recommended bulb:
50W, 40°, 2700K, 1500cd
536540



Art. No.: 115434

MR16 MODULE MOVE

Material:
Aluminium/steel/plastic

Accessory/Included parts:
Transformer (excl.)

Note:
Module can be pulled 3 cm out of the housing.

Recommended bulb:
50W, 40°, 2700K, 1500cd
536540



Art. No.: 115414

GU10 MODULE

Material:
Aluminium/plastic

Recommended bulb:
35W EnergySaver ≈ 50W
20°, 2800K, 1200cd
575370



**HI EFFICIENT
PROfilight.**



Art. No.: 115424

GX10 MODULE

Material:
Aluminium/plastic

Accessory/Included parts:
Electronic ballast (excl.)

Note:
Suitable ballast and high-voltage connection line see page 595.

Recommended bulb:
35W, 40°, 3000K, 3000cd
507340



LAMP MODULES for Aixlight® Pro 50 installation frame



Article No.	Description	Colour	Voltage	Socket/ Bulb (excl.)	Wattage bulb	Ø in cm	Length in cm	Width in cm	Height in cm	Rotation/ Swivel range	Weight	Protection class
115404	MR16 module	silver grey/black	12V AC	GU5,3/MR16	50W max.	7,0	-	-	2,5	cardanic	0,01 kg	3
115434	MR16 module Move	silver grey/black	12V AC	GU5,3/MR16	50W max.	-	6,5	8,5	9,5	350°/45°	0,16 kg	3
115414	GU10 module	silver grey/black	230V AC	GU10/GU10	50W max.	7,0	-	-	2,5	cardanic	0,01 kg	2
115424	GX10 module	silver grey/black	-	GX10/CMH-MR16	20W/35W	7,0	-	-	2,5	cardanic	0,01 kg	2



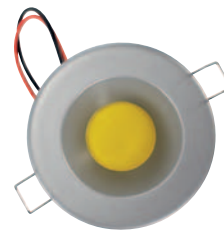
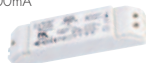
Art. No.: 112882

HORN LED**Material:**
Aluminium**Accessory/Included parts:**
LED driver (excl.)**Recommended driver:**
LED driver 6-12W, 700mA
464202

Art. No.: 160501

HORN LED COB 9W**Material:**
Plastic/aluminium**Accessory/Included parts:**
LED driver (excl.)**Note:**
Suitable for cavity ceilings with a
material thickness of max. 15 mm.**Recommended driver:**
LED driver 6-12W, 700mA
464202

Art. No.: 160531

HORN LED COB 15W**Material:**
Plastic/aluminium**Accessory/Included parts:**
LED driver (excl.)**Note:**
Suitable for cavity ceilings with a
material thickness of max. 15 mm.**Recommended driver:**
LED driver 5-15W, 1200mA
464210**COB LEDs:**

An increasing number of our products are equipped with the new COB (Chip On Board) LEDs. With this technology the LED-chips are mounted on conductor boards and connected by gold wires. The COB-technology allows the production of planar LEDs in various different constructions which consist of an aggregation of parallel switched single LEDs and provide a high light output whereas a major part of the developing heat is discharged via the conductor board. Planar LEDs with 15W for example provide a light yield which can be compared with a standard 75W incandescent lamp.



Art. No.: 112901

HORN MR16**Material:**
Steel**Accessory/Included parts:**
Transformer (excl.)**Recommended bulb:**
50W, 40°, 2700K, 1500cd
536540**Recommended transformer:**
FN E-transformer O2
20-105VA
461107

Art. No.: 112931

HORN QRB111**Material:**
Steel**Accessory/Included parts:**
Transformer (excl.)**Recommended bulb:**
75W, 2700K
24°, 3000cd 543724
45°, 950cd 543745**Recommended transformer:**
FN E-transformer O2
20-105VA
461107

Art. No.: 112951

HORN GX10**Material:**
Metal**Accessory/Included parts:**
Electronic ballast (excl.)**Recommended bulb:**
35W, 40°, 3000K, 3000cd
507340**Recommended ballast:**
Electronic ballast 35W, EEL=A2
470361

Art. No.: 112911

HORN GU10**Material:**
Steel**Recommended bulb:**
35W EnergySaver \approx 50W
20°, 2800K, 1200cd
575370

Art. No.: 112921

HORN ES111**Material:**
Steel**Recommended bulb:**
75W, 24°, 2700K, 2000cd
575672**HI EFFICIENT
PROFILIGHT**



HORN RECESSED LAMPS

When connecting several lamps, please pay attention to the total wattage! Further drivers and transformers can be found in the accessory range from page 592.

HORN LED



Article No.	Description	Colour	LED colour	Lumen	Current	Wattage bulb	Number of LED	Ø in cm	Height in cm	Install. cut-out in cm	Install. depth in cm	Angle of radiation	Weight
112882	Horn LED	alu	warm white	230	700mA	3x3W	3 PowerLED	9,5	9,0	Ø 8,2	8,8	60°	0,17 kg
112892	Horn LED	white	warm white	250	700mA	3x3W	3 PowerLED	9,5	9,0	Ø 8,2	8,8	60°	0,17 kg
160501	Horn LED COB9	white	white	563	700mA	9W	1 Planar LED	9,5	8,6	Ø 8,2	9,2	-	0,2 kg
160502	Horn LED COB9	white	warm white	556	700mA	9W	1 Planar LED	9,5	8,6	Ø 8,2	9,2	-	0,2 kg
160511	Horn LED COB9	silver grey	white	563	700mA	9W	1 Planar LED	9,5	8,6	Ø 8,2	9,2	-	0,2 kg
160512	Horn LED COB9	silver grey	warm white	556	700mA	9W	1 Planar LED	9,5	8,6	Ø 8,2	9,2	-	0,2 kg
160521	Horn LED COB15	white	white	1000	1200mA	15W	1 Planar LED	12,0	9,8	Ø 9,9	10,4	-	0,34 kg
160522	Horn LED COB15	white	warm white	955	1200mA	15W	1 Planar LED	12,0	9,8	Ø 9,9	10,4	-	0,34 kg
160531	Horn LED COB15	silver grey	white	1000	1200mA	15W	1 Planar LED	12,0	9,8	Ø 9,9	10,4	-	0,34 kg
160532	Horn LED COB15	silver grey	warm white	955	1200mA	15W	1 Planar LED	12,0	9,8	Ø 9,9	10,4	-	0,34 kg

HORN high-voltage



Article No.	Description	Colour	Voltage	Socket/ Bulb (excl.)	Wattage bulb	Ø in cm	Height in cm	Install. cut-out in cm	Install. depth in cm	Weight	Energy efficiency category ballast
112911	Horn GU10	white	230V AC	GU10/GU10	50W max.	8,3	11,5	7,5	11,5	0,13 kg	-
112921	Horn ES111	white	230V AC	GU10/ES111	75W max.	17,2	12,5	16,2	12,5	0,3 kg	-
112951	Horn GX10	white	see E-ballast	GX10/CMH-MR16	20/35W	8,5	13,0	7,2	13,0	0,15 kg	EEI=A2

HORN low-voltage



Article No.	Description	Colour	Voltage	Socket/ Bulb (excl.)	Wattage bulb	Ø in cm	Height in cm	Install. cut-out in cm	Install. depth in cm	Weight
112901	Horn MR16	white	12V AC	G5,3/MR16	50W max.	8,3	11,5	7,5	11,5	0,12 kg
112931	Horn QRB 111	white	12V AC	G53/QRB111	75W max.	17,2	12,5	16,2	12,5	0,3 kg



CRYSTAL LED



Bulb:
PowerLED (incl.)
1W

Material:
Aluminium/crystal glass

Dimensions:
visible Ø/H: 7/4 cm
Max. ceiling thickness: 1,8 cm

Accessory/Included parts:
LED driver (excl.)

Versions:
LED white
LED warm white

Art. No.:
114821
114822

Recommended driver:
LED driver 3W, 350mA
464108



DEKLED



Bulb:
PowerLED (incl.)
1W

Material:
Aluminium/PC

Dimensions:
Cover-Ø/H: 3/0,5 cm
Supply line-L: 150 cm

Accessory/Included parts:
LED driver (excl.)

Versions:
silver metallic
LED white
LED warm white

Art. No.:
112241
112242

Recommended driver:
LED driver 3W, 350mA
464108



LED KONKAV



Bulb:
PowerLED (incl.)
1W

Material:
Aluminium

Dimensions:
visible Ø/H: 4/1 cm
Supply line-L: 50 cm

Accessory/Included parts:
LED driver (excl.)

Versions:
alu brushed
LED white
LED warm white

Art. No.:
114831
114832

Recommended driver:
LED driver 3W, 350mA
464108



RECESS CAN LED



Bulb:
PowerLED (incl.)
1W

Material:
Aluminium

Dimensions:
Cover-Ø/H: 5/4,8 cm
Head-Ø/H: 5/1,6 cm
Supply line-L: 15 cm

Accessory/Included parts:
Mini-plug (incl.)
LED driver (excl.)

Note:
Suitable connector strip for through-wiring (111850) see page 593.

Versions:
alu brushed
LED white ▼
LED warm white

Art. No.:
111918
111919

Recommended driver:
LED driver 3W, 350mA
464108



SIMIT 20°



Bulb:
PowerLED (incl.)
1W

Material:
Aluminium

Dimensions:
Ø/H: 4,4/5,5 cm
Supply line-L: 15 cm

Accessory/Included parts:
Mini-plug (incl.)
LED driver (excl.)

Note:
Suitable connector strip for through-wiring (111850) see page 593.

Versions:
metal brushed
LED white ▼
LED warm white

Art. No.:
111926
111929

Recommended driver:
LED driver 3W, 350mA
464108





When connecting several lamps shown on this double-page, please take care of a series connection.

FURNITURE LED, ROUND

350mA 3 pce. 6,7 2 45°

LED
LEDTEC



Bulb:
PowerLED (incl.)
3x 1W

Material:
Aluminium

Dimensions:
Ø/H: 7,5/1,2 cm
Supply line-L: 48 cm

Accessory/Included parts:
LED driver (excl.)

Versions:
silver grey
LED white ▼
LED warm white ▼

Art. No.:
111821
111822

Recommended driver:
LED driver 3W, 350mA
464108



SIMIT 20° slewable

350mA 1 pce. 4,9 6,5 30° 20°

LED
LEDTEC



Bulb:
PowerLED (incl.)
1W

Material:
Aluminium

Dimensions:
Ø/H: 4,4/5,5 cm
Supply line-L: 15 cm

Accessory/Included parts:
Mini-plug (incl.)
LED driver (excl.)

Note:
Suitable connector strip for through-wiring (111850) see page 593.

Versions:
metal brushed
LED white ▼
LED warm white

Art. No.:
111936
111939

Recommended driver:
LED driver 3W, 350mA
464108





LED ALUMINIUM DOWNLIGHT

700mA  1 pce.   5,7  11  25°  0,16  

LED
LEDTEC



Bulb:
PowerLED (incl.)
3W

Material:
Aluminium

Dimensions:
visible Ø/H: 7,5/1,5 cm

Accessory/Included parts:
LED driver (excl.)

Versions:
alu brushed
LED warm white, 114lm

Art. No.:
114802

Recommended driver:
LED driver 3W, 700mA
464200



ZEBLED ROUND 3

350mA  3 pce.   4  11  25°  0,13  

LED
LEDTEC



Bulb:
PowerLED (incl.)
3x 1W

Material:
Aluminium

Dimensions:
visible Ø/H: 7,5/2,5 cm

Accessory/Included parts:
LED driver (excl.)

Note:
Max. ceiling thickness: 2,8 cm

Versions:
alu brushed
LED white, 160lm ▼
LED warm white, 146lm

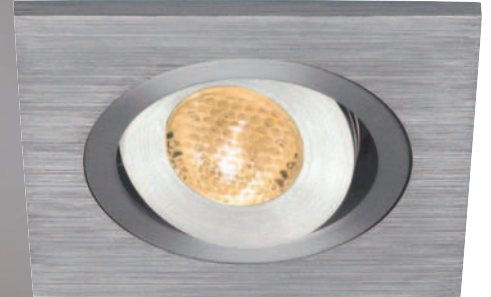
Art. No.:
114791
114792

Recommended driver:
LED driver 3W, 350mA
464108





When connecting several lamps shown on this double-page, please take care of a series connection.



LELEX 1

350mA 1 pce. 60° 5,4 3,5 25° 0,06



Bulb:
PowerLED (incl.)
1W

Material:
Aluminium

Dimensions:
L/W/H: 6/6/2 cm
Supply line-L: 30 cm

Accessory/Included parts:
Mini-plug (incl.)
LED driver (excl.)

Note:
Further drivers can be found in the accessory range from page 592.

Recommended driver:
LED driver 3W, 350mA
464108



Versions:
alu brushed
LED white
LED warm white

Art. No.:
111871
111872

Recommended connector strip:
Connector strip
111850



TRITON 3 LED

350mA 3 pce. 7 3,5 60° 25° 0,11



Bulb:
PowerLED (incl.)
3x 1W

Material:
Aluminium

Dimensions:
Ø/H: 8/4 cm
Supply line-L: 30 cm

Accessory/Included parts:
Mini-plug (incl.)
LED driver (excl.)

Note:
Further drivers can be found in the accessory range from page 592 onward. Suitable for cavity walls and ceilings with a material thickness of max. 20 mm!

Recommended driver:
LED driver 3W, 350mA
464108



Versions:
silver grey
LED white, 210lm
LED warm white, 150lm

Art. No.:
111851
111852

matt white
LED white, 210lm
LED warm white, 150lm

113661
113662

Recommended connector strip:
Connector strip
111850



TRITON LED RGB

350mA 3 pce. 7 9 60° 35° 0,19



Bulb:
RGB PowerLED (incl.)
1x red, green, blue
3x 1W

Material:
Aluminium

Dimensions:
Ø: 8 cm
Supply line-L: 30 cm

Accessory/Included parts:
Controller (excl.)

Note:
Suitable for cavity walls and ceilings with a material thickness of max. 20 mm!

Versions:
silver grey
LED RGB

Art. No.:
111853

Recommended controller:
Power LIM[®]2 RGB
Master controller 350mA
470583





TRITON 6

700mA



6 pce.



60°



10,8



13,5



25°



0,57



0,57



0,57



0,57



Bulb:
PowerLED (incl.)
6x 3W

Material:
Aluminium

Dimensions:
Ø/H: 12/10 cm
visible-Ø/H: 12/0,6 cm
Supply line-L: 30 cm

Accessory/Included parts:
Plug (incl.)
LED driver (excl.)

Versions:
matt white
LED white
LED warm white

silver anodized
LED white
LED warm white

Art. No.:
113641
113642

113651
113652

Recommended driver:
LED driver 10-18W, 700mA
464201



Suitable for cavity ceilings with a material thickness up to max. 20 mm.

TRITON 6 GIMBLE

350mA



6 pce.



350°



45°



10,8



72



25°



0,28



0,28



0,28



0,28



Bulb:
PowerLED (incl.)
6x 1W

Material:
Aluminium

Dimensions:
Ø/H: 12/6 cm
Supply line-L: 30 cm

Accessory/Included parts:
Plug (incl.)
LED driver (excl.)

Versions:
matt white
LED white
LED warm white

silver anodized
LED white
LED warm white

Art. No.:
113621
113622

113631
113632

Recommended driver:
LED driver 18W, 350mA
464111



Recommended connector strip:
3 outlets
111850



Do not cover the rear side of the lamp with insulating material.
Suitable for cavity ceilings with a material thickness up to max. 20 mm.

TRITON 3 GIMBLE

350mA



3 pce.



350°



45°



7,8



6



25°



0,16



0,16



0,16



Bulb:
PowerLED (incl.)
3x 1W

Material:
Aluminium

Dimensions:
Ø/H: 9,1/4,8 cm
Supply line-L: 30 cm

Accessory/Included parts:
Plug (incl.)
LED driver (excl.)

Versions:
matt white
LED white
LED warm white

silver anodized
LED white
LED warm white

Art. No.:
113601
113602

113611
113612

Recommended driver:
LED driver 3W, 350mA
464108



Do not cover the rear side of the lamp with insulating material.
Suitable for cavity ceilings with a material thickness up to max. 20 mm.







When connecting several lamps shown on this double-page, please take care of a series connection.

NEW TRIA LED Disk

230~



Bulb:
1x PowerLED module (incl.)
14,5W

Dimensions:
Visible product-Ø/H: 14,1/0,25 cm
Product-Ø/H: 14,1/16,7 cm

Note:
Equipped with the LED Disk module of Philips: Ra 90; Light flux 800lm.
Suitable for cavity ceilings with a material thickness of max. 20 mm.

Versions:
matt white, 2700K
35°
60°

alu brushed, 2700K
35°
60°

Art. No.:
113581
113591

113584
113594

DomeLED DOWNLIGHT

700mA



Bulb:
PowerLED (incl.)
6x 3W

Material:
Aluminium

Dimensions:
Ø/H: 13,5/6,5 cm

Accessory/Included parts:
LED driver (excl.)

Versions:
silver grey
LED white, 825lm
LED warm white, 615lm

Art. No.:
111961
111962

Recommended driver:
LED driver 10-18W, 700mA
464201



EYEDOWN LED 3x 1W

350mA



Bulb:
PowerLED (incl.)
3x 1W

Material:
Aluminium/glass

Dimensions:
Ø/H: 6,8/4,3 cm
Supply line-L: 45 cm

Accessory/Included parts:
Plug (incl.).
LED driver (excl.)

Versions:
alu
LED warm white, 190lm

Art. No.:
111982

Recommended driver:
LED driver 3W, 350mA
464108



Suitable for cavity ceilings with a material thickness of max. 30 mm.

EYEDOWN LED 6x 1W

350mA



Bulb:
PowerLED (incl.)
6x 1W

Material:
Aluminium/glass

Dimensions:
Ø/H: 8,8/5,2 cm
Supply line-L: 45 cm

Accessory/Included parts:
Plug (incl.).
LED driver (excl.)

Versions:
alu
LED warm white, 400lm

Art. No.:
111992

Recommended driver:
LED driver 12W, 350mA
464110



Suitable for cavity ceilings with a material thickness of max. 30 mm.



REAL N-TIC LED SERIES 108x46



LED
LEDTEC



Bulb:
SMD LED (incl.)
2,8W total

Material:
Cover: chromed stainless steel 304
Plastic

Dimensions:
Ø/H: 10,8/4,7 cm
visible-H: 1 cm
Supply line-L: 1,4 m

Accessory/Included parts:
Power unit (excl.)

Versions:
chrome
LED white ▼
LED warm white

Art. No.:
112301
112302

Recommended power unit:
LED power unit 12W, 24V=
470502



Suitable for cavity walls and ceilings with a material thickness of 1-12 mm.

REAL N-TIC LED SERIES 152x46



LED
LEDTEC



Bulb:
SMD LED (incl.)
3,8W total

Material:
Cover: chromed stainless steel 304
Plastic

Dimensions:
Ø/H: 15,2/4,7 cm
visible-H: 1 cm
Supply line-L: 1,4 m

Accessory/Included parts:
Power unit (excl.)

Versions:
chrome
LED warm white

Art. No.:
112322

Recommended power unit:
LED power unit 12W, 24V=
470502

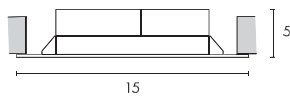


Suitable for cavity walls and ceilings with a material thickness of 1-12 mm.



LEDPANEL 100

230~  100 pce.   14/14  5    0,2  



Bulb:
LED (incl.)
8,5W total

Material:
Plastic

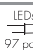



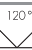

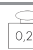


Dimensions:
L/W/D: 15/15/5 cm

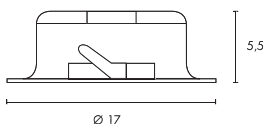
Accessory/Included parts:
LED driver (incl.)

Versions:
silver grey
LED white
LED warm white

Art. No.:
160354
160352

LEDPANEL ROUND

230~  97 pce.   15  5,5    0,22  



Bulb:
LED (incl.)
8W total

Material:
Plastic

Dimensions:
Ø/H: 17/5,5 cm

Accessory/Included parts:
LED driver (incl.)

Versions:
silver grey
LED white
LED warm white

white
LED white
LED warm white

Art. No.:
160381
160382

160371
160372

Suitable for cavity ceilings with a material thickness of max. 15 mm!



When connecting several lamps, please pay attention to the total wattage! Further drivers can be found in the accessory range from page 592 onward.

LED HORN

700mA



3 pce.



8,2



8,8



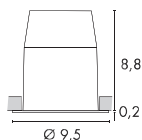
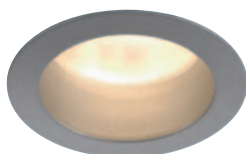
60°



0,1V



LED
LEDTEC



Bulb:
PowerLED (incl.)
3x 3W

Material:
Aluminium

Dimensions:
Supply line-L: 50 cm

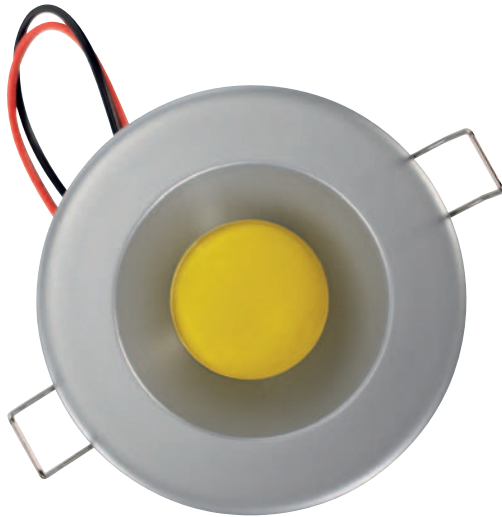
Accessory/Included parts:
Plug (incl.)
LED driver (excl.)

Versions:
silver grey
LED warm white, 250lm
white
LED warm white, 250lm

Art. No.:
112882
112892

Recommended driver:
LED driver 6-12W, 700mA
464202




COB LEDs:

An increasing number of our products are equipped with the new COB (Chip On Board) LEDs. With this technology the LED-chips are mounted on conductor boards and connected by gold wires. The COB-technology allows the production of planar LEDs in various different constructions which consist of an aggregation of parallel switched single LEDs and provide a high light output whereas a major part of the developing heat is discharged via the conductor board. Planar LEDs with 15W for example provide a light yield which can be compared with a standard 75W incandescent lamp.

LED HORN COB 9W

700mA



Bulb:
Planar LED (incl.)
9W

Material:
Plastic/aluminium

Dimensions:
Ø/H: 9,5/8,6 cm

Accessory/Included parts:
LED driver (excl.)

Note:
Suitable for cavity ceilings with a material thickness of max. 15 mm.

Versions:
white
LED white, 563lm
LED warm white, 556lm

silver grey
LED white, 563lm
LED warm white, 556lm

Art. No.:
160501
160502

160511
160512

Recommended driver:
LED driver 6-12W, 700mA
464202


LED HORN COB 15W

1200mA



Bulb:
Planar LED (incl.)
15W

Material:
Plastic/aluminium

Dimensions:
Ø/H: 12,9/8 cm

Accessory/Included parts:
LED driver (excl.)

Note:
Suitable for cavity ceilings with a material thickness of max. 15 mm.

Versions:
white
LED white, 1000lm
LED warm white, 955lm

silver grey
LED white, 1000lm
LED warm white, 955lm

Art. No.:
160521
160522

160531
160532

Recommended driver:
LED driver 5-15W, 1200mA
464210


15W LED DOWNLIGHT

1200mA



Bulb:
Planar LED (incl.)
15W

Material:
Aluminium/steel/glass

Accessory/Included parts:
LED driver (excl.)

Note:
Suitable for cavity ceilings with a material thickness of max. 35 mm.

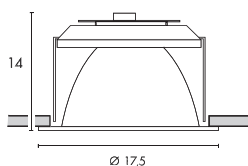
Versions:
white
LED white, 1100lm
LED warm white, 750lm

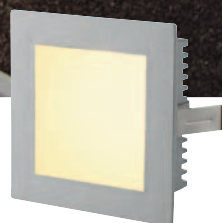
silver grey
LED white, 1100lm
LED warm white, 750lm

Art. No.:
160401
160402

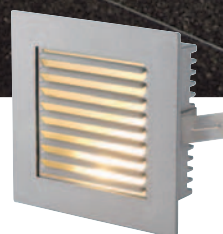
160411
160412

Recommended driver:
LED driver 5-15W, 1200mA
464210





Art. No.: 112732



Art. No.: 112762



Art. No.: 112772

FLAT FRAMES

Material:
Aluminium/glass

Accessory/Included parts:
Transformer (excl.)

Note:
The models Basic and Slat are suitable for the application with the Octagon LED module in connection with a conventional transformer.

Recommended bulb:
20W, 2700K, 330lm
512220

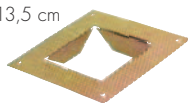


ACCESSORY for Flat Frames

Flush-mounted box
W/H/D:
8,4/12,3/6,7 cm
112781



Flush-mounted frame
W/H: 13,5/13,5 cm
112780



Recommended transformer:
FN Mini transformer 1, 10-60VA
461060



When connecting several lamps, please pay attention to the total wattage! Further transformers can be found in the accessory range.

FLAT FRAMES

12~



Article No.	Description	Colour	Voltage	Socket/ Bulb (excl.)	Wattage bulb	Width in cm	Height in cm	Depth in cm	Inst. cut-out in cm	Inst. depth in cm	Weight
112732	Flat Frame Basic	silver grey	12V AC	G4/pin socket	20W max.	9,0	9,0	3,1	7,5/7,5	4,5	0,15 kg
112762	Flat Frame Slat	silver grey	12V AC	G4/pin socket	20W max.	9,0	9,0	3,1	7,5/7,5	4,5	0,15 kg
112772	Flat Frame Curve	silver grey	12V AC	G4/pin socket	20W max.	9,0	9,0	3,1	7,5/7,5	4,5	0,15 kg



Art. No.: 111202

FRAME BASIC JC

Material:
Aluminium

Accessory/Included parts:
Transformer (excl.)

Note:
Only for cavity walls and ceilings.

Recommended bulb:
20W, 2700K, 330lm
512220


Art. No.: 151878

FRAME
Material:
Steel

Accessory/Included parts:
Transformer (excl.)

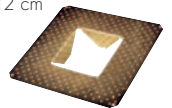
Recommended bulb:
10W, 2700K, 120lm
512210


Art. No.: 151862

FRAME CURVE
Material:
Steel

Accessory/Included parts:
Transformer (excl.)

Recommended bulb:
10W, 2700K, 120lm
512210

ACCESSORY
Flush-mounted frame
for Art. No.: 151862/-71/-78
Installation-W/H: 7/6,5 cm
Outer-W/L: 12/12 cm
925100

Recommended transformer:
FN Mini transformer 1, 10-60VA
461060


When connecting several lamps, please pay attention to the total wattage! Further transformers can be found in the accessory range.

FRAMES

12~



Article No.	Description	Colour	Voltage	Socket/ Bulb (excl.)	Wattage Bulb	Width in cm	Height in cm	Depth in cm	Inst. cut-out in cm	Inst. depth in cm	Material thickness Inst. surface	Weight
111202	Frame Basic JC	silver grey	12V AC	G4/pin socket	20W max.	9,0	9,0	12,0	7,5/7,5	13,0	-	0,25 kg
151871	Frame	silver grey	12V AC	G4/pin socket	10W max.	7,5	7,5	5,0	6,5/7,1	6,0	> 8 mm	0,23 kg
151878	Frame	metal brushed	12V AC	G4/pin socket	10W max.	7,5	7,5	5,0	6,5/7,1	6,0	> 8 mm	0,23 kg
151862	Frame Curve	silver grey	12V AC	G4/pin socket	10W max.	7,5	7,5	5,0	6,5/7,1	6,0	> 8 mm	0,23 kg



MR11 SP

12~



white



chrome



Socket/Bulb:
G4/MR11 (excl.)
20W max.

Material:
Aluminium

Dimensions:
Cover-Ø: 6,5 cm

Accessory/Included parts:
Transformer (excl.)

Versions:
white
silver grey

chrome

Art. No.:
111051
111059

111052

Recommended bulb:
20W, 30°, 2700K, 450cd
533228



Recommended transformer:
FN E-transformer 01, 20-60VA
461067



SLIM MR16 Design by CDC

12~



Socket/Bulb:
G5,3/MR16 (excl.)
50W max.

Material:
Aluminium

Dimensions:
Cover-Ø: 7 cm

Accessory/Included parts:
Transformer (excl.)

Versions:
alu anodized

Art. No.:
111308

Recommended bulb:
50W, 40°, 2700K, 1500cd
536540



Recommended transformer:
FN E-transformer 01, 20-60VA
461067



PIKA

12~



brass



white

Socket/Bulb:
G5,3/MR16 (excl.)
50W max.

Material:
Aluminium

Dimensions:
Cover-Ø: 8 cm

Accessory/Included parts:
Transformer (excl.)

Versions:
white
silver grey
chrome
brass

Art. No.:
111181
111189
111182
111183

Recommended bulb:
50W, 40°, 2700K, 1500cd
536540



Recommended transformer:
FN E-transformer 01, 20-60VA
461067



PIKA, SLEWABLE

12~



chrome

Socket/Bulb:
G5,3/MR16 (excl.)
50W max.

Material:
Aluminium

Dimensions:
Cover-Ø: 8,5 cm

Accessory/Included parts:
Transformer (excl.)

Versions:
white
silver grey
chrome
brass

Art. No.:
111171
111179
111172
111173

Recommended bulb:
50W, 40°, 2700K, 1500cd
536540



Recommended transformer:
FN E-transformer 01, 20-60VA
461067







MR16 SP

12~



black



silver grey



white



chrome matt

Socket/Bulb:
G5,3/MR16 (excl.)
50W max.

Material:
Aluminium

Dimensions:
Cover-Ø: 8,2 cm

Accessory/Included parts:
Transformer (excl.)

Recommended transformer:
FN Etransformer 01, 20-60VA
461067

Versions:
black
white
silver grey

chrome
gold
titanium
chrome matt

Recommended bulb:
50W, 40°, 2700K, 1500cd
536540

Art. No.:
112090
112091
112099

112092
112093
112097
112098





HORN MR16

12~



Socket/Bulb:
G5,3/MR16 (excl.)
50W max.

Material:
Steel

Dimensions:
Ø/H: 8,3/11,5 cm

Accessory/Included parts:
Transformer (excl.)

Versions:
white

Recommended bulb:
50W, 40°, 2700K, 1500cd
536540



Recommended transformer:
FN E-transformer 01, 20-60VA
461067



DORU

12~



Socket/Bulb:
G5,3/MR16 (excl.)
20W max.

Material:
Aluminium/glass

Dimensions:
Ø: 8,5 cm

Accessory/Included parts:
Transformer (excl.)

Versions:
alu natural
Glass satined

Recommended bulb:
20W, 40°, 2700K, 450cd
536240

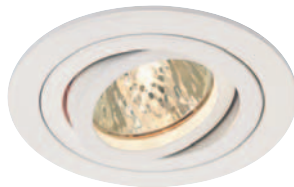


Recommended transformer:
FN E-transformer 01, 20-60VA
461067



TRIA 2 DOWNLIGHT

12~



white



silver grey



chrome



nickel satined

Socket/Bulb:
G5,3/MR16 (excl.)
35W max.

Material:
Aluminium

Dimensions:
Cover-Ø: 9 cm

Accessory/Included parts:
Transformer (excl.)

Recommended transformer:
FN E-transformer 01, 20-60VA
461067



Versions:
white
silver grey

chrome
nickel satined

Art. No.:
111441
111449

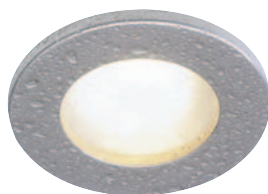
111442
111447

Recommended bulb:
35W, 38°, 2700K, 810cd
536338



FGL OUT MR16, ROUND

12~



titanium



silver grey

Socket/Bulb:
G5,3/MR16 (excl.)
35W max.

Material:
Aluminium/glass

Dimensions:
Cover-Ø: 8 cm

Accessory/Included parts:
Transformer (excl.)

Recommended transformer:
FN E-transformer 01, 20-60VA
461067



Versions:
Glass satined
white

Art. No.:

111002
111007
111008

Recommended bulb:
35W, 38°, 2700K, 810cd
536338





NEW TURNO MR16

12~



silver grey



white

Socket/Bulb:
G5,3/MR16 (excl.)
35W max.

Material:
Steel

Dimensions:
Cover-Ø: 9,4 cm

Accessory/Included parts:
Transformer (excl.)

Versions:
white

chrome
old brass
titanium
metal brushed
silver grey

Art. No.:
112831

112832
112834
112837
112838
112839

Recommended bulb:
35W, 38°, 2700K, 810cd
536338



NEW TRIA ROUND, MR16


alu brushed


 matt white
with PowerLED bulb (550852) see page 612

Socket/Bulb:
G5,3/MR16 (excl.)
50W max.

Material:
Aluminium

Dimensions:
Cover-Ø: 9 cm

Accessory/Included parts:
Transformer (excl.)

Versions:
alu brushed
matt white

Recommended bulb:
50W, 40°, 2700K, 1500cd
536540

Art. No.:
111274
113500

AUSTRATURN


chrome matt


Socket/Bulb:
G5,3/MR16 (excl.)
50W max.

Material:
Aluminium

Dimensions:
Cover-Ø: 10,2 cm

Accessory/Included parts:
Transformer (excl.)

Versions:
white
chrome
titanium
chrome matt
silver grey

Recommended bulb:
50W, 40°, 2700K, 1500cd
536540

Art. No.:
112061
112062
112067
112068
112069

LUZO 2


metal brushed

Socket/Bulb:
G5,3/MR16 (excl.)
50W max.

Material:
Aluminium/glass

Dimensions:
Cover-Ø: 11,5 cm

Accessory/Included parts:
Transformer (excl.)

Versions:
white
silver grey

 chrome matt
metal brushed

Recommended bulb:
50W, 40°, 2700K, 1500cd
536540

Art. No.:
113311
113319

 113317
113318

GIMBLE ROUND MR16


chrome

Socket/Bulb:
G5,3/MR16 (excl.)
50W max.

Material:
Aluminium

Dimensions:
Cover-Ø: 11,5 cm

Accessory/Included parts:
Transformer (excl.)

Versions:
white
silver grey

 chrome
chrome matt

Recommended bulb:
50W, 40°, 2700K, 1500cd
536540

Art. No.:
112151
112158

 112152
112157

CONNECTION RECOMMENDATION
Recommended transformer:
FN Mini transformer 1, 10-60VA
461060

Recommended transformer:
FN E-transformer 04, 50-210VA
461217

Low-voltage distribution block 6-fold:
410140




silver grey



chrome



gold



titanium



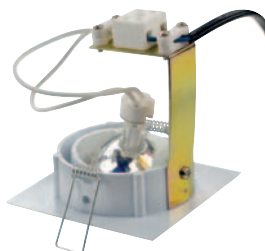
chrome matt

SQUARE

12~



white



Socket/Bulb:
G5,3/MR16 (excl.)
50W max.

Material:
Aluminium

Dimensions:
Cover-L/W: 8,7/8,7 cm

Accessory/Included parts:
Transformer (excl.)

Versions:
white
silver grey

chrome
gold
titanium
chrome matt

Art. No.:
113201
113209

113202
113203
113207
113208

Recommended bulb:
50W, 40°, 2700K, 1500cd
536540



FGL OUT MR16, SQUARE

12~



silver grey



Socket/Bulb:
G5,3/MR16 (excl.)
35W max.

Material:
Aluminium/glass

Dimensions:
Cover-W/L: 8,9/8,9 cm

Accessory/Included parts:
Transformer (excl.)

Versions:
Glass satined
white

chrome
titanium
silver grey

Art. No.:
111121

111122
111127
111128

Recommended bulb:
35W, 38°, 2700K, 810cd
536338



FRAME BASIC MR16

12~



Suitable for cavity walls and ceilings.



Socket/Bulb:
G5,3/MR16 (excl.)
50W max.

Material:
Aluminium/glass

Dimensions:
W/H/D: 9/9/12 cm

Accessory/Included parts:
Transformer (excl.)

Versions:
silver grey

Recommended bulb:
50W, 40°, 2700K, 1500cd
536540

Art. No.:
111222



FRAME DISTA MR16

12~



Suitable for cavity walls and ceilings.



Socket/Bulb:
G5,3/MR16 (excl.)
35W max.

Material:
Aluminium/glass

Dimensions:
W/H/D: 9/9/12,5 cm

Accessory/Included parts:
Transformer (excl.)

Versions:
silver grey

Recommended bulb:
35W, 38°, 2700K, 810cd
536338

Art. No.:
111232





CONNECTION RECOMMENDATION

Recommended transformer:
FN Mini transformer 1, 10-60VA
461060



Recommended transformer:
FN E-transformer 04, 50-210VA
461217



Low-voltage distribution block 6-fold:
410140





NEW TRIA MR16

12~



Material:
Aluminium

Recommended transformer:

FN Mini transformer 1, 10-60VA
461060

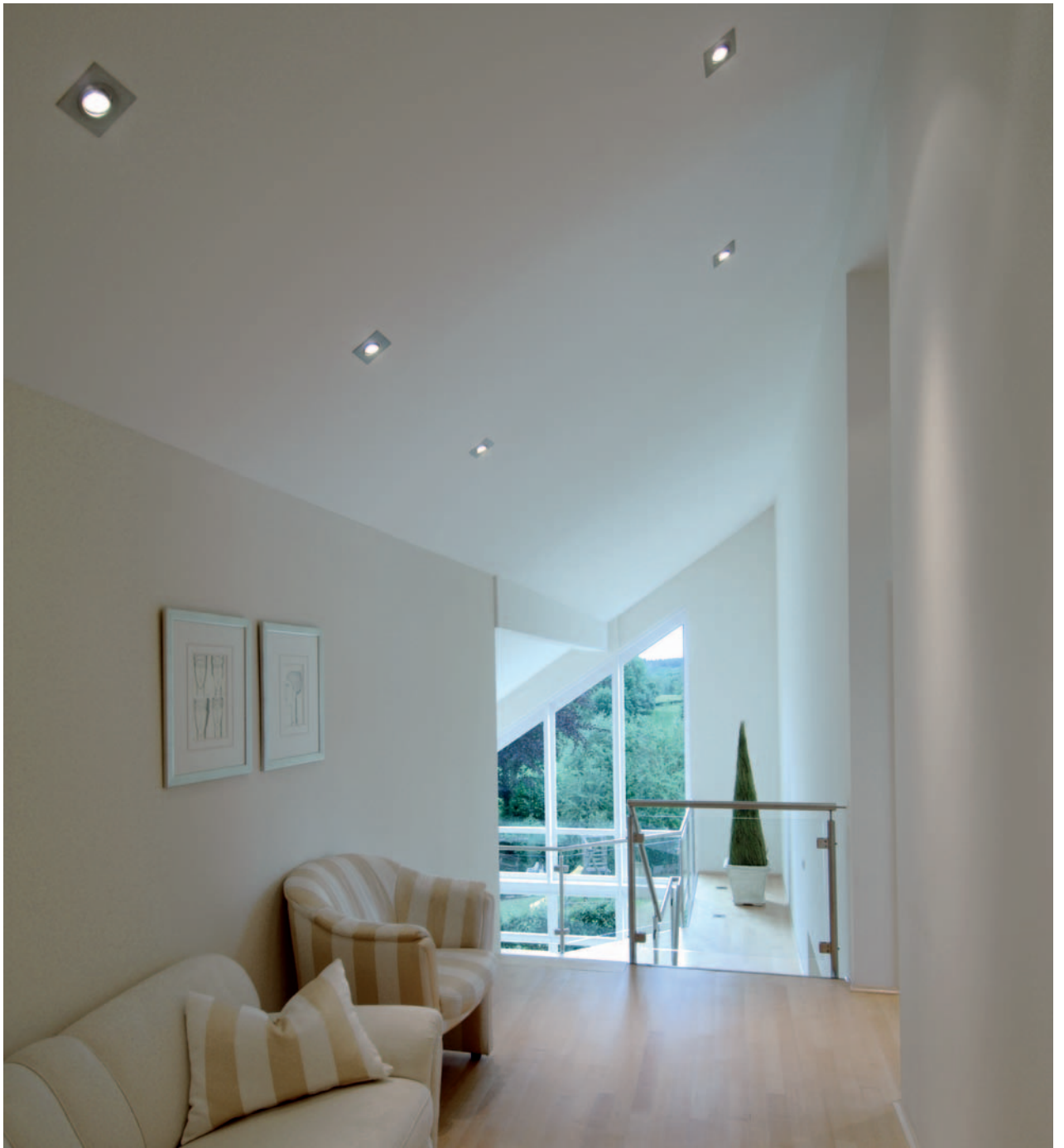
Recommended bulb:

50W, 40°, 2700K, 1500cd
536540



Accessory/Included parts:
Transformer (excl.)

Article No.	Description	Colour	Voltage	Socket/ Bulb (excl.)	Wattage bulb	Length in cm	Width in cm	Height in cm	Inst. cut-out in cm	Inst. depth in cm	Rotation/ Swivel range	Weight
111351	New Tria 1 MR16	alu brushed	12V AC	G5,3/MR16	50W max.	9,0	9,0	13,0	Ø 8,0	13,0	360°/30°	0,15 kg
113501	New Tria 1 MR16	mat white	12V AC	G5,3/MR16	50W max.	9,0	9,0	13,0	Ø 8,0	13,0	360°/30°	0,15 kg
111352	New Tria 2 MR16	alu brushed	12V AC	G5,3/MR16	2x 50W max.	17,0	9,0	13,0	16,0/8,2	13,0	360°/30°	0,30 kg
111353	New Tria 3 MR16	alu brushed	12V AC	G5,3/MR16	3x 50W max.	25,5	9,0	13,0	24,5/8,2	13,0	360°/30°	0,43 kg



ROW MR16

12~



Material:
Aluminium

Note:
The specified dimensions refer to the visible part of the product.

Recommended transformer:
FN Mini transformer 1, 10-60VA
461060

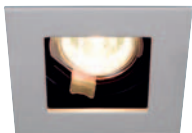


Recommended bulb:
50W, 40°, 2700K, 1500cd
536540



Accessory/Included parts:
Transformer (excl.)

Article No.	Description	Colour	Voltage	Socket/ Bulb (excl.)	Wattage bulb	Width in cm	Height in cm	Inst. cut-out in cm	Inst. depth in cm	Rotation Swivel range	Weight
112531	Row 1 MR16	silver grey	12V AC	GU5,3/MR16	50W max.	11,0	11,0	∅ 9,7	9,5	350°/45°	0,2 kg
112631	Row 1 MR16	white	12V AC	GU5,3/MR16	50W max.	11,0	11,0	∅ 9,7	9,5	350°/45°	0,2 kg
112532 ▼	Row 2 MR16	silver grey	12V AC	GU5,3/MR16	2x 50W max.	20,0	11,0	18,5/9,7	9,5	350°/45°	0,3 kg
112632 ▼	Row 2 MR16	white	12V AC	GU5,3/MR16	2x 50W max.	20,0	11,0	18,5/9,7	9,5	350°/45°	0,3 kg



Art. No.: 112444
INDI REC 1S cardanic

Material:
Steel

Accessory/Included parts:
Transformer (excl.)

Note:
Suitable for cavity ceilings.



Art. No.: 112454
INDI REC 1F

Material:
Steel

Accessory/Included parts:
Transformer (excl.)

Note:
Suitable for cavity ceilings.



Art. No.: 112464
INDI REC 2S

Material:
Steel

Accessory/Included parts:
Transformer (excl.)

Note:
Suitable for cavity ceilings.

Recommended transformer:
FN E-transformer 03
50-150VA
461157



Recommended bulb:
50W, 40°, 2700K, 1500cd
536540



Recommended bulb:
50W, 40°, 2700K, 1500cd
536540



Recommended bulb:
35W, 38°, 2700K, 810cd
536338



Recommended transformer:
FN Mini transformer 1, 10-60VA
461060



INDI REC



Article No.	Description	Colour	Voltage	Socket/ Bulb (excl.)	Wattage bulb	Width in cm	Height in cm	Depth in cm	Inst. cut-out in cm	Inst. depth in cm	Material thickness Inst. surface in mm	Rotation/ Swivel range	Weight
112444	Indi Rec 1S	silver grey/black	12V AC	GU5,3/MR16	50W max.	10,0	10,0	11,0	∅ 9,0	11,0	0,5 - 20,0	cardanic	0,31 kg
112454	Indi Rec 1F	silver grey/black	12V AC	GU5,3/MR16	50W max.	18,0	9,0	13,5	17,5/70	14,0	0,5 - 20,0	-/45°	0,51 kg
112464	Indi Rec 2S	silver grey/black	12V AC	GU5,3/MR16	2x 35W max.	18,0	9,0	13,5	17,5/70	14,0	0,5 - 20,0	-/70°	0,54 kg

**AIXLIGHT® MOD MR16**

Material:
Aluminium/steel

Accessory/Included parts:
Transformer (excl.)

Recommended transformer:
FN E-transformer 03
50-50VA
461157



Recommended bulb:
50W, 40°, 2700K, 1500cd
536540



Article No.	Description	Colour	Voltage	Socket/ Bulb (excl.)	Wattage bulb	Length in cm	Width in cm	Height in cm	Inst. cut-out in cm	Inst. depth in cm	Rotation/ Swivel range	Weight
154112	Aixlight® Mod 1 MR16	silver grey	12V AC	GU53/MR16	50W max.	13,5	13,5	10,0	11,0/11,0	9,5	cardanic	0,40 kg
154122	Aixlight® Mod 2 MR16	silver grey	12V AC	GU53/MR16	2x 50W max.	24,0	13,5	10,0	22,0/11,0	9,5	cardanic	0,75 kg
154132	Aixlight® Mod 3 MR16	silver grey	12V AC	GU5,3/MR16	3x 50W max.	35,0	13,5	10,0	32,5/11,0	9,5	cardanic	1,10 kg
154142	Aixlight® Mod 4 MR16	silver grey	12V AC	GU5,3/MR16	4x 50W max.	23,0	23,0	10,0	20,0/20,0	9,5	cardanic	1,75 kg



LIGHT POINT

12~



2,6



3



0,05



Socket/Bulb:
G4/pin socket (excl.)
10W max.

Material:
Aluminium

Dimensions:
Cover-Ø: 3 cm
Supply line: 14 cm

Accessory/Included parts:
Transformer (excl.)

Versions:
With open cable end.
white
chrome
gold

Art. No.:
118011
118012
118013

Conversion to LED technology by using the bulb G4 LED Super Flux and G4 High Power LED see page 610.



Operate only with conventional transformer!

Recommended bulb:
10W, 2700K, 120lm
512210



CRYSTAL 7

12~



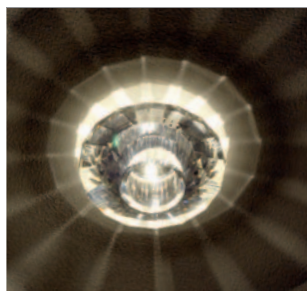
5,6



11



0,71



Socket/Bulb:
G4/pin socket (excl.)
20W max.

Material:
Steel/crystal glass

Dimensions:
visible Ø/H: 11/5 cm

Accessory/Included parts:
Transformer (excl.)

Versions:
chrome/crystal clear

Art. No.:
114927

Recommended bulb:
20W, 2700K, 330lm
512220



CRYSTAL 8

12~



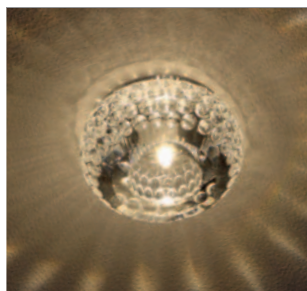
5,0



11



0,69



Socket/Bulb:
G4/pin socket (excl.)
20W max.

Material:
Steel/crystal glass

Dimensions:
visible Ø/H: 9,7/5 cm

Accessory/Included parts:
Transformer (excl.)

Note:
Suitable for cavity ceilings with a material thickness up to max. 15 mm.

Versions:
crystal clear

Art. No.:
114931

Recommended bulb:
20W, 2700K, 330lm
512220



CRYSTAL 6

12~



6



11



0,81



Socket/Bulb:
G4/pin socket (excl.)
20W max.

Material:
Steel/crystal glass

Dimensions:
visible Ø/H: 9,5/6 cm

Accessory/Included parts:
Transformer (excl.)

Versions:
chrome/crystal clear

Art. No.:
114926

Recommended bulb:
20W, 2700K, 330lm
512220



YUDI

12~



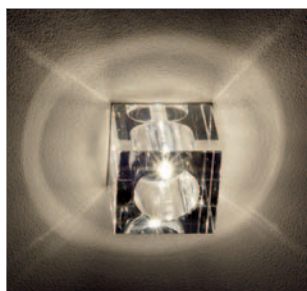
5,6



11



0,63



Socket/Bulb:
G6,35/pin socket (excl.)
35W max.

Material:
Crystal glass

Dimensions:
visible L/W/H: 7/7/6,1 cm

Accessory/Included parts:
Transformer (excl.)

Versions:
clear

Art. No.:
114961

half clear/black
half clear/amber

114960
114962

Recommended bulb:
35W, 2700K, 595lm
512235





GRID Design by CDC

12~



Socket/Bulb:
GY6,35/pin socket (excl.)
50W max.

Material:
Aluminium

Dimensions:
visible Ø/H: 7/7 cm

Accessory/Included parts:
Transformer (excl.)

Versions:
alu natural

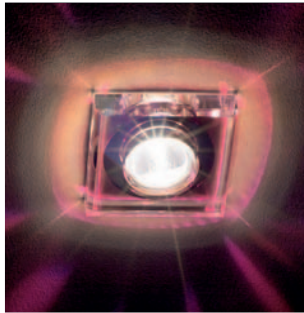
Art. No.:
134234

Recommended bulb:
50W, 2700K, 900lm
512250



CRYSTAL 1

12~



Socket/Bulb:
GU5,3/MR16 (excl.)
35W max.

Material:
Steel/crystal glass

Dimensions:
visible L/W/H:
10,2/10,2/2,7 cm

Accessory/Included parts:
Transformer (excl.)

Versions:
chrome/crystal clear

Art. No.:
114920

Recommended bulb:
35W, 40°, 2700K, 810cd
535338



CRYSTAL 2

12~



Socket/Bulb:
GU5,3/MR16 (excl.)
35W max.

Material:
Steel/crystal glass

Dimensions:
visible Ø/H: 10/2,7 cm

Accessory/Included parts:
Transformer (excl.)

Versions:
chrome/crystal clear

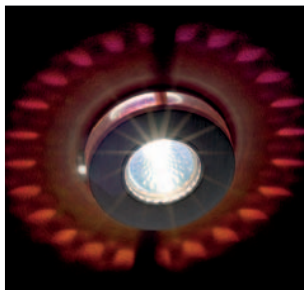
Art. No.:
114921

Recommended bulb:
35W, 40°, 2700K, 810cd
535338



CRYSTAL 4

12~



Socket/Bulb:
GU5,3/MR16 (excl.)
35W max.

Material:
Aluminium/crystal glass

Dimensions:
visible Ø/H: 9,2/2,8 cm

Accessory/Included parts:
Transformer (excl.)

Versions:
metal brushed/crystal clear

Art. No.:
114923

Recommended bulb:
35W, 40°, 2700K, 810cd
535338



CONNECTION RECOMMENDATION

Recommended transformer:
FN Mini transformer 1, 10-60VA
461060



Recommended transformer:
FN E-transformer 04, 50-210VA
461217



Low-voltage distribution block 6-fold:
410140





NICELIGHT 1



Socket/Bulb:
GX5,3/MR16 (excl.)
50W max.

Material:
Aluminium/glass

Dimensions:
visible L/W/H: 13/13/0,5 cm

Accessory/Included parts:
Transformer (excl.)

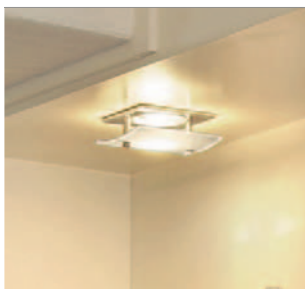
Versions:
alu brushed

Art. No.:
114941

Recommended bulb:
50W, 40°, 2700K, 1500cd
536540



TWISTER



Socket/Bulb:
GX5,3/MR16 (excl.)
50W max.

Material:
Aluminium/glass

Dimensions:
L/W/H: 7/7/3 cm

Accessory/Included parts:
Transformer (excl.)

Versions:
chrome/glass satined

Art. No.:
111112

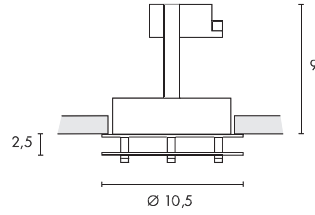
Recommended bulb:
50W, 40°, 2700K, 1500cd
536540





REDIT MR16

12~



Socket/Bulb:
G3,5/MR16 (excl.)
50W max.

Material:
Aluminium/glass

Accessory/Included parts:
Transformer (excl.)

Versions:
white/glass partial satined ▼

Art. No.:
111601

Recommended bulb:
50W, 40°, 2700K, 1500cd
536540



Suitable for cavity ceilings with a material thickness of 5-20 mm.

BAGUS

12~



P6.5



Socket/Bulb:
GU5,3/MR16 (excl.)
35W max.

Material:
Aluminium/glass

Dimensions:
Cover-Ø/H: 9,5/1,5 cm

Accessory/Included parts:
Transformer (excl.)

Versions:
chrome/glass satined

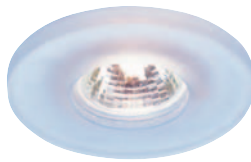
Art. No.:
111532

Recommended bulb:
35W, 38°, 2700K, 810cd
536338



DISC DOWNLIGHT

12~



Socket/Bulb:
GU5,3/MR16 (excl.)
50W max.

Material:
Glass/steel

Dimensions:
Cover-Ø: 10 cm

Accessory/Included parts:
Transformer (excl.)

Versions:
white

Art. No.:
114701

Recommended bulb:
50W, 40°, 2700K, 1500cd
536540



SATINA

12~



Socket/Bulb:
G5,3/MR16 (excl.)
50W max.

Material:
Glass

Dimensions:
Cover-Ø: 12 cm

Accessory/Included parts:
Transformer (excl.)

Versions:
white

Art. No.:
114901

Recommended bulb:
50W, 40°, 2700K, 1500cd
536540



CONNECTION RECOMMENDATION

Recommended transformer:
FN Mini transformer 1, 10-60VA
461060



Recommended transformer:
FN E-transformer 04, 50-210VA
461217



Low-voltage distribution block 6-fold:
410140





ROW QRB111

12~



Socket/Bulb:
G53/QRB111 (excl.)
50W max.

Versions:
silver grey

Art. No.:
112550



Material:
Aluminium/steel

Recommended bulb:
50W, 45°, 2700K, 700cd
543545



Dimensions:
Cover-L/W: 18/18 cm

Accessory/Included parts:
Housing (incl.)
Transformer (excl.)

SLIM QRB111 Design by CDC

12~



Socket/Bulb:
G53/QRB111 (excl.)
100W max.

Versions:
alu anodized

Art. No.:
111338



Material:
Aluminium

Recommended bulb:
75W, 45°, 2700K, 950cd
543745



Dimensions:
Cover-Ø: 13 cm

Accessory/Included parts:
Transformer (excl.)

NEW TRIA, ROUND, QRB111

12~



alu brushed

matt white
with PowerLED bulb [550132] see page 613.

Socket/Bulb:
G53/QRB111 (excl.)
75W max.

Versions:
alu brushed
matt white

Art. No.:
111370
113530

Material:
Aluminium

Recommended bulb:
75W, 45°, 2700K, 950cd
543745



Dimensions:
Cover-Ø: 16,5 cm

Accessory/Included parts:
Transformer (excl.)

BERET QRB

12~



Socket/Bulb:
G53/QRB111 (excl.)
75W max.

Versions:
white
silver grey

Art. No.:
162181
162184

Material:
Aluminium

Recommended bulb:
75W, 45°, 2700K, 950cd
543745



Dimensions:
Ø/H: 16,5/12 cm

Accessory/Included parts:
Transformer (excl.)

Suitable for cavity ceilings with a material thickness up to max. 25 mm.
With quick release fastener to change the bulb.

CONNECTION RECOMMENDATION

Recommended transformer:
FN Mini transformer 1, 10-60VA
461060



Recommended transformer:
FN E-transformer 04, 50-210VA
461217



Low-voltage distribution block 6-fold:
410140





HORN QRB111

12~



16,2



12,5



0,3



Socket/Bulb:
G53/QRB111 (excl.)
75W max.

Material:
Steel

Dimensions:
Ø/H: 17,2/12,5 cm

Accessory/Included parts:
Transformer (excl.)

Versions:
white

Recommended bulb:
75W, 2700K
24°, 3000cd 543724
45°, 950cd 543745

Art. No.:
112931





NEW TRIA QRB111

12~



Material:
Aluminium

Accessory/Included parts:
Transformer (excl.)

Recommended transformer:

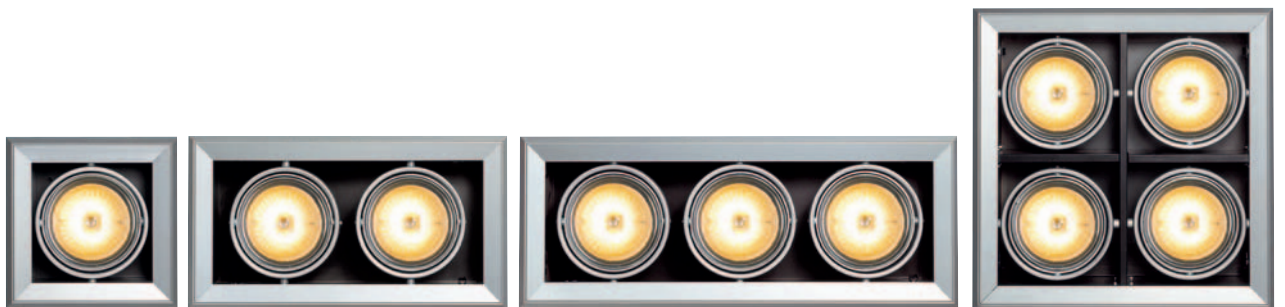
FN Etransformer 03
50-150VA
461157



Recommended bulb:
75W, 45°, 2700K, 950cd
543745



Article No.	Description	Colour	Voltage	Socket/ Bulb (excl.)	Wattage bulb	Length in cm	Width in cm	Height in cm	Inst. cut-out in cm	Inst. depth in cm	Rotation/ Swivel range	Weight
111371	New Tria 1 QRB111	alu brushed	12V AC	G53/QRB111	75W max.	16,5	16,5	12,5	Ø 15,0	12,5	360°/30°	0,35 kg
113531	New Tria 1 QRB111	matt white	12V AC	G53/QRB111	75W max.	16,5	16,5	12,5	Ø 15,0	12,5	360°/30°	0,35 kg
111372	New Tria 2 QRB111	alu brushed	12V AC	G53/QRB111	2x 75W max.	31,5	16,5	12,5	29,7/15,5	12,5	360°/30°	0,67 kg
111373	New Tria 3 QRB111	alu brushed	12V AC	G53/QRB111	3x 75W max.	46,5	16,5	12,5	45,0/15,5	12,5	360°/30°	0,72 kg


AIXLIGHT® MOD QRB111


Material:
Aluminium/steel

Accessory/Included parts:
Transformer (excl.)

Recommended transformer:
FN E-transformer 03
50-150VA
461157



Recommended bulb:
50W, 45°, 2700K, 700cd
543545



Article No.	Description	Colour	Voltage	Socket/ Bulb (excl.)	Wattage bulb	Length in cm	Width in cm	Height in cm	Inst. cut-out in cm	Inst. depth in cm	Rotation/ Swivel range	Weight
154012	Aixlight® Mod 1 QRB111	silver grey	12V AC	G53/QRB111	50W max.	20,5	20,5	10,0	16,5/16,5	9,5	cardanic	0,85 kg
154022	Aixlight® Mod 2 QRB111	silver grey	12V AC	G53/QRB111	2x 50W max.	39,0	20,5	10,0	34,5/170	9,5	cardanic	1,76 kg
154032	Aixlight® Mod 3 QRB111	silver grey	12V AC	G53/QRB111	3x 50W max.	52,0	20,5	10,0	49,0/170	9,5	cardanic	2,35 kg
154042	Aixlight® Mod 4 QRB111	silver grey	12V AC	G53/QRB111	4x 50W max.	36,0	36,0	10,0	33,0/33,0	9,5	cardanic	3,15 kg



GU10 SP

230~



7,6



14,5



30°



0,4



chrome



chrome matt



Socket/Bulb:
GU10/GU10 (excl.)
50W max.

Material:
Aluminium

Dimensions:
Cover-Ø: 8,2 cm

Versions:
white
silver grey

chrome
titanium
chrome matt

Art. No.:
116111
116119

116112
116117
116118

Recommended bulb:
35W, 20°, 2800K, 1200cd
575370





SLIM GU10 Design by CDC

230~



Socket/Bulb:
GU10/GU10 (excl.)
35W max.

Material:
Aluminium

Dimensions:
Cover-Ø: 7 cm

Versions:
alu anodized

Art. No.:
111318

Recommended bulb:
35W, 50°, 2700K, 270cd
575351



FGL OUT GU10, ROUND

230~



silver grey



Socket/Bulb:
GU10/GU10 (excl.)
35W max.

Material:
Aluminium/glass

Dimensions:
Cover-Ø: 8 cm

Note:
Suitable for ceilings with a material
thickness of max. 15 mm.

Versions:
Glass satined
white
chrome
silver grey
titanium

Art. No.:
111021
111022
111024
111027

Recommended bulb:
35W, 20°, 2800K, 1200cd
575370



HORN GU10

230~



Socket/Bulb:
GU10/GU10 (excl.)
50W max.

Material:
Steel

Dimensions:
Ø/H: 8,3/11,5 cm

Versions:
white

Art. No.:
112911

Recommended bulb:
35W, 20°, 2800K, 1200cd
575370



NEW TRIA, ROUND, GU10

230~



alu brushed



matt white

Socket/Bulb:
GU10/GU10 (excl.)
50W max.

Material:
Aluminium

Dimensions:
Cover-Ø: 9 cm

Versions:
alu brushed
matt white

Art. No.:
111360
113510

Recommended bulb:
35W, 20°, 2800K, 1200cd
575370



TURNO GU10

230~



chrome

Socket/Bulb:
GU10/GU10 (excl.)
50W max.

Material:
Steel

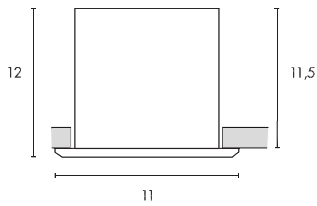
Dimensions:
Cover-Ø: 9,5 cm

Versions:
white
chrome
chrome matt

Art. No.:
116101
116102
116107

Recommended bulb:
35W, 20°, 2800K, 1200cd
575370





AIXLIGHT® MOD GU10

230~    

Material:
Aluminium/steel

Recommended bulb:
35W, 20°, 2800K, 1200cd
575370



Article No.	Description	Colour	Voltage	Socket/ Bulb (excl.)	Wattage bulb	Length in cm	Width in cm	Height in cm	Inst. cut-out in cm	Inst. depth in cm	Rotation/ Swivel range	Weight
154552	Aixlight® Mod 1 GU10	silver grey	230V AC	GU10/GU10	50W max.	13,5	13,5	11,5	11,0/11,0	12,0	cardanic	0,62 kg
154562	Aixlight® Mod 2 GU10	silver grey	230V AC	GU10/GU10	2x 50W max.	28,5	13,5	11,5	26,0/11,0	12,0	cardanic	0,90 kg
154572	Aixlight® Mod 3 GU10	silver grey	230V AC	GU10/GU10	3x 50W max.	40,5	13,5	11,5	38,0/11,0	12,0	cardanic	1,60 kg
154582	Aixlight® Mod 4 GU10	silver grey	230V AC	GU10/GU10	4x 50W max.	23,0	23,0	11,5	20,0/20,0	12,0	cardanic	2,35 kg



NEW TRIA GU10

230~   

Material:
Aluminium

Recommended bulb:
35W, 20°, 2800K, 1200cd
575370



Article No.	Description	Colour	Voltage	Socket/ Bulb (excl.)	Wattage bulb	Length in cm	Width in cm	Height in cm	Inst. cut-out in cm	Inst. depth in cm	Rotation/ Swivel range	Weight
113511	New Tria 1 GU10	mat white	230V AC	GU10/GU10	50W max.	9,0	9,0	12,5	∅ 8,0	17,0	360°/30°	0,20 kg
111361	New Tria 1 GU10	alu brushed	230V AC	GU10/GU10	50W max.	9,0	9,0	12,5	∅ 8,0	17,0	360°/30°	0,20 kg
111362	New Tria 2 GU10	alu brushed	230V AC	GU10/GU10	2x 50W max.	17,0	9,0	12,5	16,0/8,2	17,0	360°/30°	0,35 kg
111363	New Tria 3 GU10	alu brushed	230V AC	GU10/GU10	3x 50W max.	25,5	9,0	12,5	24,5/8,2	17,0	360°/30°	0,46 kg





ROW 1 GU10



silver grey

Socket/Bulb:
GU10/GU10 (excl.)
50W max.

Material:
Aluminium

Dimensions:
Cover-L/W: 11/11 cm

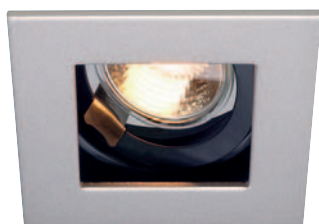
Versions:
silver grey
white

Art. No.:
112561
112661

Recommended bulb:
35W, 20°, 2800K, 1200cd
575370



INDI REC 1S GU10



Socket/Bulb:
GU10/GU10 (excl.)
50W max.

Material:
Steel

Dimensions:
L/W/H: 10/10/11 cm

Note:
Suitable for cavity walls and ceilings
with a material thickness of 0,5-20 mm.

Versions:
silver grey/black

Art. No.:
112474

Recommended bulb:
35W, 20°, 2800K, 1200cd
575370



FGL OUT GU10, SQUARE



chrome



Socket/Bulb:
GU10/GU10 (excl.)
35W max.

Material:
Aluminium/glass

Dimensions:
Cover-W/L: 9/9 cm

Note:
Suitable for ceilings with a material
thickness of max. 15 mm.

Versions:
Glass satined
white
chrome
silver grey
titanium

Art. No.:
111141
111142
111144
111147

Recommended bulb:
35W, 20°, 2800K, 1200cd
575370



GU10 SP SQUARE



white

Socket/Bulb:
GU10/GU10 (excl.)
50W max.

Material:
Steel

Dimensions:
L/W/H: 9/9/12,5 cm
visible L/W/H: 9/9/0,17 cm

Versions:
white
silver grey
titanium

Art. No.:
113211
113214
113217

chrome 113212
chrome matt 113218

Recommended bulb:
35W, 20°, 2800K, 1200cd
575370





FRAME BASIC GU10

230~



Socket/Bulb:
GU10/GU10 (excl.)
50W max.

Versions:
silver grey

Art. No.:
111242

Material:
Aluminium/glass

Recommended bulb:
35W, 20°, 2800K, 1200cd
575370



Dimensions:
W/H/D: 9/9/15 cm

Note:
Suitable for cavity walls and ceilings!

FRAME DISTA GU10

230~



Socket/Bulb:
GU10/GU10 (excl.)
50W max.

Versions:
silver grey

Art. No.:
111252

Material:
Aluminium/glass

Recommended bulb:
35W, 20°, 2800K, 1200cd
575370

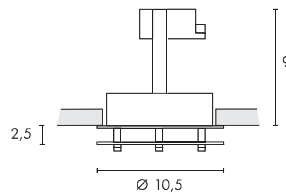


Dimensions:
W/H/D: 9/9/15,5 cm

Note:
Suitable for cavity walls and ceilings!

REDIT GU10

230~



Socket/Bulb:
GU10/GU10 (excl.)
35W max.

Versions:
white
Glass partial satined ▼

Art. No.:
111611

Material:
Aluminium/glass

Recommended bulb:
35W, 50°, 2700K, 270cd
575351



Dimensions:
Ø/H: 10,5/13 cm

Note:
Suitable for cavity ceilings with a
material thickness of 5-20 mm.

DICHRO CUBE

230~



Socket/Bulb:
G9/G9 (excl.)
40W max.

Versions:
dichroic

Art. No.:
114928

Material:
Glass

Recommended bulb:
33W, 460lm, EEK=C
519451



Dimensions:
visible L/W/H: 8/7,8/6,5 cm

DICHRO TUBE

230~



Socket/Bulb:
G9/G9 (excl.)
40W max.

Versions:
dichroic

Art. No.:
114925

Material:
Glass

Recommended bulb:
33W, 460lm, EEK=C
519451



Dimensions:
visible Ø/H: 8/6,4 cm



HORN ES111

230~



Socket/Bulb:
GU10/ES111 (excl.)
75W max.

Material:
Steel

Dimensions:
Ø/H: 17,2/12,5 cm

Versions:
white

Art. No.:
112921

Recommended bulb:
75W, 24°, 2700K, 2000cd
575672



TROMP Downlight Design by CDC

230~



Socket/Bulb:
GU10/ES111 (excl.)
50W max.
and
2GX13/T5-Ring EnergySaver (excl.)
22W

Material:
Plastic PC

Dimensions:
Ø/H: 32/16,5 cm

Accessory/Included parts:
Electronic ballast (incl.)

Note:
ES111 bulb and T5 ring can be
switched separately.

Versions:
white

Art. No.:
111941

Recommended bulb:
50W, 2700K, 1300cd
575652



Recommended bulb:
22W, 3000K, 1900lm, EEK=A
548220



SLIM ES111 Design by CDC

230~



Socket/Bulb:
GU10/ES111 (excl.)
75W max.

Versions:
alu anodized

Art. No.:
111328

Material:
Aluminium

Recommended bulb:
75W, 24°, 2700K, 2000cd
575672



Dimensions:
Cover-Ø: 13 cm

Note:
Not suitable for DomeLED ES111
bulb!

NEW TRIA, ROUND, ES111

230~



alu brushed


 matt white
with PowerLED bulb [550352] see page 613.

Socket/Bulb:
GU10/ES111 (excl.)
75W max.

Versions:
alu brushed
matt white

Art. No.:
111380
113540

Material:
Aluminium

Recommended bulb:
75W, 24°, 2700K, 2000cd
575672



Dimensions:
Cover-Ø: 16,5 cm

BERET ES111

230~



white

Socket/Bulb:
GU10/ES111 (excl.)
75W max.

Versions:
white
silver grey

Art. No.:
162191
162194

Material:
Aluminium

Recommended bulb:
75W, 24°, 2700K, 2000cd
575672



Dimensions:
Ø/H: 16,5/12 cm

Note:
Suitable for cavity ceilings with a
material thickness of max. 25 mm.
With quick release fastener to
change the bulb.

ROW ES111

230~



Socket/Bulb:
GU10/ES111 (excl.)
75W max.

Versions:
silver grey

Art. No.:
112553

Material:
Aluminium/steel

Recommended bulb:
75W, 24°, 2700K, 2000cd
575672



Dimensions:
Cover-L/W: 18/18 cm



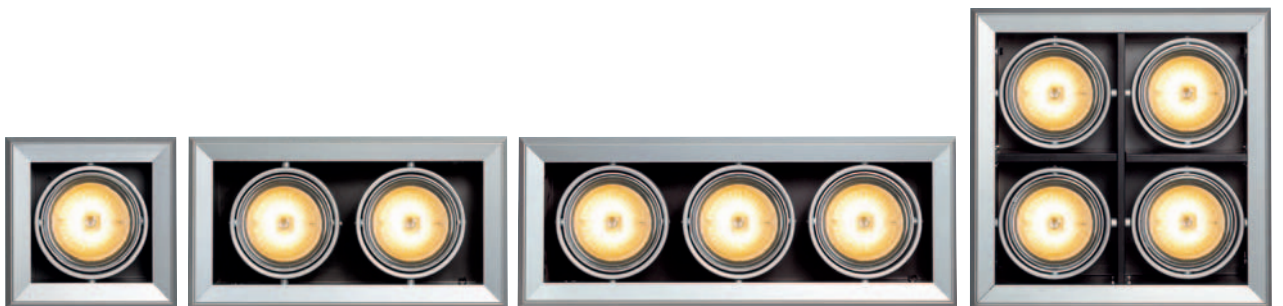

NEW TRIA ES111

230~


Material:
Aluminium

Recommended bulb:
75W, 24°, 2700K, 2000cd
575672


Article No.	Description	Colour	Voltage	Socket/ Bulb (excl.)	Wattage bulb	Length in cm	Width in cm	Height in cm	Inst. cut-out in cm	Inst. depth in cm	Rotation/ Swivel range	Weight
113541	New Tria 1 ES111	mat white	230V AC	GU10/ES111	75W max.	16,5	16,5	12,5	∅ 15,0	12,5	360°/30°	0,38 kg
111381	New Tria 1 ES111	alu brushed	230V AC	GU10/ES111	75W max.	16,5	16,5	12,5	∅ 15,0	12,5	360°/30°	0,38 kg
111382	New Tria 2 ES111	alu brushed	230V AC	GU10/ES111	2x 75W max.	31,5	16,5	12,5	29,7/15,5	12,5	360°/30°	0,67 kg
111383	New Tria 3 ES111	alu brushed	230V AC	GU10/ES111	3x 75W max.	46,5	16,5	12,5	45,0/15,5	12,5	360°/30°	1,04 kg


AIXLIGHT® MOD ES111

230~


Material:
Aluminium

Recommended bulb:
75W, 24°, 2700K, 2000cd
575672


Article No.	Description	Colour	Voltage	Socket/ Bulb (excl.)	Wattage bulb	Length in cm	Width in cm	Height in cm	Inst. cut-out in cm	Inst. depth in cm	Rotation/ Swivel range	Weight
154052	Aixlight® Mod 1 ES111	silver grey	230V AC	GU10/ES111	75W max.	20,5	20,5	15,0	16,0/16,0	15,0	cardanic	1,05 kg
154062	Aixlight® Mod 2 ES111	silver grey	230V AC	GU10/ES111	2x 75W max.	39,0	20,5	15,0	35,5/17,0	15,0	cardanic	2,2 kg
154072	Aixlight® Mod 3 ES111	silver grey	230V AC	GU10/ES111	3x 75W max.	52,0	20,5	15,0	49,0/17,0	15,0	cardanic	2,85 kg
154082	Aixlight® Mod 4 ES111	silver grey	230V AC	GU10/ES111	4x 75W max.	36,0	36,0	15,0	32,0/32,0	15,0	cardanic	4,65 kg



MOUNTING RING for GX53

230~



Mounting socket for PowerLED GX53 and all common GX53 bulbs.



Socket/Bulb:
GX53/GX53 EnergySaver (excl.)
9W max.
or LED GX53, 1,2W (excl.)
or PowerLED GX53, 3x 1,4W (excl.)

Material:
Plastic PC

Dimensions:
Ø/H: 9,5/3,2 cm

Versions:
white
chrome
silver grey

Art. No.:
112231
112232
112234

Recommended bulb:
9W, 2700K, 260lm
508860



SLIM ENERGYSAVER GX53 Design by CDC

230~



Socket/Bulb:
GX53/GX53 (excl.)
9W max.
or LED GX53, 1,2W

Material:
Aluminium

Dimensions:
Cover-Ø: 10 cm

Versions:
alu anodized

Art. No.:
111348

Recommended bulb:
9W, 2700K, 260lm
508860



DL 181 GX53

230~



Socket/Bulb:
GX53/GX53 (excl.)
11W max.

Material:
Plastic

Dimensions:
Product-Ø/H: 13,5/6,5 cm

Versions:
white
silver grey

Art. No.:
112291
112294

Recommended bulb:
9W, 2700K, 260lm
508860



ROW ELT

230~



Socket/Bulb:
E27/EnergySaver (excl.)
up to max. Ø/L: 4,5/17 cm

Material:
Aluminium/steel/glass

Dimensions:
Cover-L/W: 18/18 cm

Accessory/Included parts:
Diffuser glass (incl.)

Versions:
silver grey

Art. No.:
112552

Recommended bulb:
15W, 2700K, 800lm, EEK=A
508960



ELT DOWNLIGHT

230~



Socket/Bulb:
E27/EnergySaver (excl.)
up to max. Ø/L: 5,2/17,5 cm

Material:
Steel

Dimensions:
Ø/D: 14,5/17 cm

Versions:
white
silver grey

Art. No.:
152561
152564

Recommended bulb:
23W, 2700K, 1350lm, EEK=A
508970





GLASS TUBE E27

230-



Socket/Bulb:
E27/AGL (excl.)
60W max.
or
E27/EnergySaver (excl.)
up to max. Ø/L: 5,5/13 cm

Material:
Steel/glass

Dimensions:
visible Ø/H: 12/13 cm

Versions:
white/chrome

Art. No.:
111592

Recommended bulb:
23W, 2700K, 1350lm, EEK=A
508970





KOTAK WALL

230~



Socket/Bulb:
E27/EnergySaver (excl.)
up to max. Ø/L: 7/17,5 cm

Material:
Aluminium/steel/glass

Dimensions:
W/H/D: 24/20,5/11 cm

Note:
For cavity wall with a material
thickness of max. 12 mm.

Versions:
Glass satined
silver grey

Flush-mounted frame
Outer-L/W: 30,5/24,5 cm 925251

Recommended bulb:
23W, 2700K, 1350lm, EEK=A
508970



KOTAK ELECTRONIC BALLAST

230~



Socket/Bulb:
G24q-3/
TC-DE 4-pin EnergySaver (excl.)
2x 26W

Material:
Aluminium/glass

Dimensions:
L/W/D: 20/23/12 cm

Accessory/Included parts:
Electronic ballast (incl.)

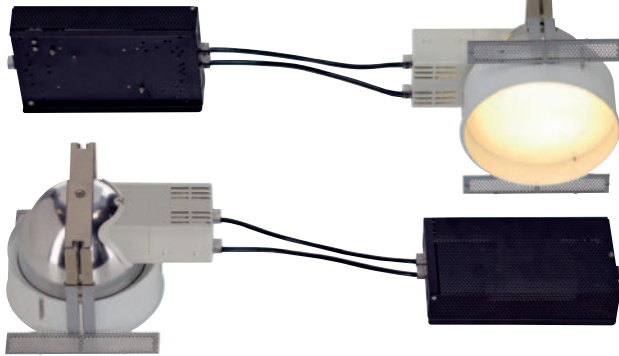
Versions:
Glass satined
white
silver grey

Recommended bulb:
26W, 3000K, 1800lm, EEK=B
508222




RCL 102 TC-DE FRAMELESS SET

230~



Socket/Bulb:
G24q-2/
TC-DE 4-pin EnergySaver (excl.)
2x18W

Material:
Aluminium/steel/plastic

Dimensions:
Ø/W/H: 18/24/15 cm
Ballast:
L/W/H: 23,5/12,5/5 cm
Connecting cable-L: 20 cm

Accessory/Included parts:
Electronic ballast (incl.)
Mounting bracket, suction cup and
screws (incl.)

Note:
Suitable for cavity ceilings with a
material thickness of 10-60 mm.

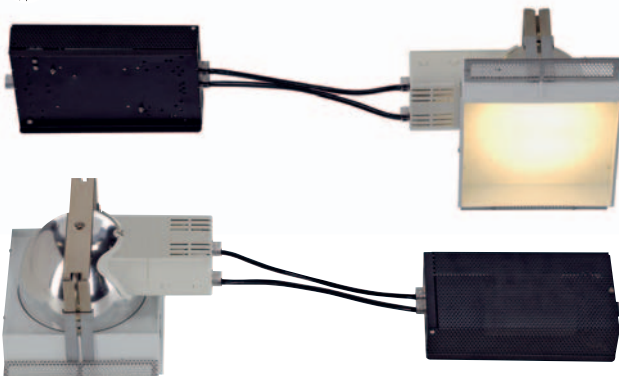
Versions:
white

Art. No.:
115480

Recommended bulb:
18W, 3000K, 1200lm, EEK=B
508220


RCL 103 TC-DE FRAMELESS SET

230~



Socket/Bulb:
G24q-2/
TC-DE 4-pin EnergySaver (excl.)
2x18W

Material:
Aluminium/steel/plastic

Dimensions:
L/W/D: 24,5/17,7/15 cm
Ballast:
L/W/H: 23,5/12,5/5 cm
Connecting cable-L: 20 cm

Accessory/Included parts:
Electronic ballast (incl.)
Mounting bracket, suction cup and
screws (incl.)

Note:
Suitable for cavity ceilings with a
material thickness of 10-60 mm.

Versions:
white

Art. No.:
115490

Recommended bulb:
18W, 3000K, 1200lm, EEK=B
508220





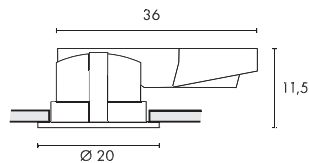


PLADO 18/26W

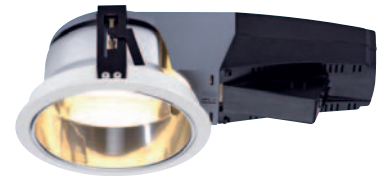
230~

Material:
Plastic PCAccessory/Included parts:
Low-loss ballast (incl.)
Grid (incl.)Recommended bulb:
18W, 2700K, 1200lm, EEK=B
508218Recommended bulb:
26W, 2700K, 1800lm, EEK=B
508226

Article No.	Description	Colour	Voltage	Socket/ Bulb (excl.)	Wattage bulb	Ø in cm	Length in cm	Width in cm	Height in cm	Install-Ø in cm	Inst. depth in cm	Ceiling thickness in cm	Weight
161501	Plado 1x18W	white	230V AC	G24d-2/TC-D Energysaver	18W	20,5	35,0	-	13,5	19,0	13,5	0,5-3,5	1,3/ kg
161511	Plado 2x18W	white	230V AC	G24d-2/TC-D Energysaver	2x 18W	20,5	35,0	-	13,5	19,0	13,5	0,5-3,5	2,0 kg
161521	Plado 1x26W	white	230V AC	G24d-3/TC-D Energysaver	26W	20,5	35,0	-	13,5	19,0	13,5	0,5-3,5	1,37 kg
161531	Plado 2x26W	white	230V AC	G24d-3/TC-D Energysaver	2x 26W	20,5	35,0	-	13,5	19,0	13,5	0,5-3,5	2,0 kg



Dimensional drawing Essens flat



ESSENS 13W / 18W / 26W

230~

Material:
Aluminium/plasticRecommended bulb:
13W, 3000K, 900lm, EEK=A
508212Recommended bulb:
18W, 3000K, 1200lm, EEK=B
508220Recommended bulb:
26W, 3000K, 1800lm, EEK=B
508222Accessory/Included parts:
Electronic ballast (incl.)

Article No.	Description	Colour	Voltage	IP class	Socket/ Bulb (excl.)	Wattage bulb	Ø in cm	Length in cm	Height in cm	Install-Ø in cm	Inst. depth in cm	Cavity ceiling thickness in cm	Weight
161631	Essens, flat 2x13W	white	230V AC	-	G24q-1/TC-DE 4pin Energysaver	2x13W	20,0	36,0	11,5	18,5	19,0	up to max. 3,0	1,0 kg
161611	Essens, flat 1x18W	white	230V AC	-	G24q-2/TC-DE 4pin Energysaver	1x 18W	20,0	36,0	11,5	18,5	19,0	up to max. 3,0	1,0 kg
161641	Essens, flat 2x18W	white	230V AC	-	G24q-2/TC-DE 4pin Energysaver	2x 18W	20,0	36,0	11,5	18,5	19,0	up to max. 3,0	1,0 kg
161621	Essens, flat 1x26W	white	230V AC	-	G24q-3/TC-DE 4pin Energysaver	1x 26W	20,0	36,0	11,5	18,5	19,0	up to max. 3,0	1,0 kg
161651	Essens, flat 2x26W	white	230V AC	-	G24q-3/TC-DE 4pin Energysaver	2x 26W	20,0	36,0	11,5	18,5	19,0	up to max. 3,0	1,0 kg
161741	Essens, deep 2x18W	white	230V AC	IP44	G24q-2/TC-DE 4pin Energysaver	2x 18W	20,0	36,0	15,5	18,5	20,5	up to max. 3,5	1,4 kg
161751	Essens, deep 2x26W	white	230V AC	IP44	G24q-3/TC-DE 4pin Energysaver	2x 26W	20,0	36,0	15,5	18,5	20,5	up to max. 3,5	1,4 kg

RAPIDO 2x 26W ELECTRONIC BALLAST

230~

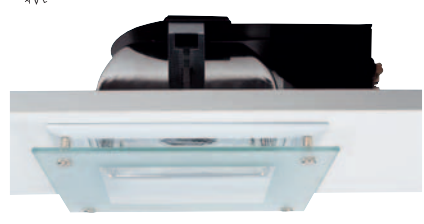
Socket/Bulb:
G24q-3/TC-DE EnergySaver (incl.)
2x 26WMaterial:
Aluminium/plasticDimensions:
Cover-Ø: 23 cm,
Housing-L/W/H: 30/19/14 cmAccessory/Included parts:
Osram electronic ballast (incl.)
Darklight grid (incl.)
2x Bulb 3000K, EEK=B (incl.)Versions:
silver greyArt. No.:
161326



Art. No.: 160029



Art. No.: 160022



Art. No.: 160020

QUOR 52

230~



Material:
Aluminium/glass

Accessory/Included parts:
Electronic ballast (incl.)

Recommended bulb:
26W, 3000K, 1800lm, EEL=B
508222



Article No.	Description	Colour	Voltage	Socket/ Bulb (excl.)	Wattage bulb	Length in cm	Width in cm	Cover height in cm	Inst. cut-out in cm	Inst. depth in cm	Weight
160021	Quor 52 E-ballast	white	230V AC	G24q-3/TC-DE 4pin Energysaver	2x 26W	23,5	23,5	-	21/21	13,0	1,5 kg
160029	Quor 52 E-ballast	grey	230V AC	G24q-3/TC-DE 4pin Energysaver	2x 26W	23,5	23,5	-	21/21	13,0	1,5 kg
160022	Quor 52/G E-ballast	white Glass satined	230V AC	G24q-3/TC-DE 4pin Energysaver	2x 26W	25,0	25,0	3,0	21/21	13,0	1,5 kg
160020	Quor 52/G E-ballast	white Glass partial satined	230V AC	G24q-3/TC-DE 4pin Energysaver	2x 26W	25,0	25,0	3,0	21/21	13,0	1,5 kg



Art. No.: 160019



Art. No.: 160011

TC DL 2x 13W ELECTRONIC BALLAST/2x 26W

230~


Material:
Aluminium

Accessory/Included parts:
Electronic ballast (incl.)

Recommended bulb:
13W, 3000K, 900lm, EEK=A
508212

Recommended bulb:
26W, 3000K, 1800lm, EEK=B
508222


Article No.	Description	Colour	Voltage	Socket/ Bulb (excl.)	Wattage bulb	Length in cm	Width in cm	Depth in cm	Inst. cut-out in cm	Inst. depth in cm	Swivel range	Weight
160011	TC DL 2x13W Eballast	white	230V AC	G24q-1/TC-DE 4pin Energysaver	2x 13W	23,0	14,5	13,0	12,5/21	12,0	75°	1,5 kg
160019	TC DL 2x13W Eballast	silver grey	230V AC	G24q-1/TC-DE 4pin Energysaver	2x 13W	23,0	14,5	13,0	12,5/21	12,0	75°	1,5 kg
160031	TC DL 2x26W Eballast	white	230V AC	G24q-3/TC-DE 4pin Energysaver	2x 26W	21,2	27,4	19,0	26/19,5	18,5	65°	2,1 kg
160039	TC DL 2x26W Eballast	silver grey	230V AC	G24q-3/TC-DE 4pin Energysaver	2x 26W	21,2	27,4	19,0	26/19,5	18,5	65°	2,1 kg



T5-BAR, 24W

230~



Socket/Bulb:
G5/T5 EnergySaver (excl.)
24W

Material:
Aluminium/acrylic

Dimensions:
L/W/H: 60,5/5,8/9,8 cm

Accessory/Included parts:
Electronic ballast (incl.)
Diffusor (incl.)

Versions:
alu anodized

Art. No.:
160124

Recommended bulb:
24W, 3000K, 1700lm
548024

(PU see page 617)



Only suitable for cavity walls and ceilings.

T5-BAR, 54W

230~



Socket/Bulb:
G5/T5 EnergySaver (excl.)
54W

Material:
Aluminium/acrylic

Dimensions:
L/W/H: 120,5/5,8/9,8 cm

Accessory/Included parts:
Electronic ballast (incl.)
Diffusor (incl.)

Versions:
alu anodized

Art. No.:
160134

Recommended bulb:
54W, 3000K, 4450lm
548054

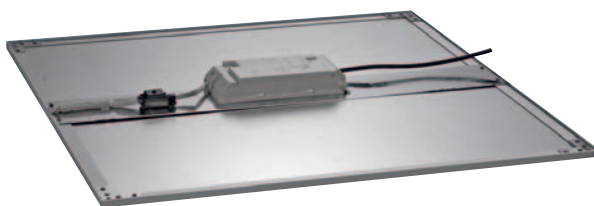
(PU see page 617)



Only suitable for cavity walls and ceilings.



LED PANEL CL 136



Socket/Bulb:
SMD 5630 LED
50W

Material:
Aluminium/acrylic

Dimensions:
L/W/H: 59,6/59,6/3,2 cm

Accessory/Included parts:
Power unit (excl.)
4 spacer L: 5 cm (incl.)

Note:
For grid ceilings 60 x 60cm.

Versions:
silver grey anodized
white, 2500lm
warm white, 2420lm

Grid lamp adapter:
For fitting into 62 x 62 cm
grid ceilings.

Art. No.:
158501
158502

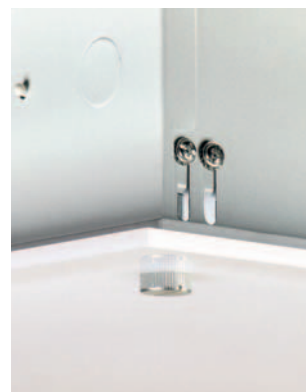
158110

Recommended power unit:

Power unit 60W, 24V=
470506



When connecting several lamps, please pay attention to the total wattage! Further power units can be found in the accessory range.



The diffuser plate is height-adjustable (approx. 2 cm) by simply loosening the screws.



GRID LAMP BIG PAN Design by CDC

230~



Socket/Bulb:

G13/T8 EnergySaver (excl.)
4x 18W

Material:

Acrylic/steel

Dimensions:

Lamp-L/W/H:
64,5/64/11,5 cm
Acrylic plate-L/W: 64/64 cm
Distance ceiling-plate: 2 cm max.

Accessory/Included parts:

Electronic ballast (incl.)

Note:

For grid ceilings 60 x 60 cm. With height-adjustable diffuser plate of acrylic.

Versions:

white

Art. No.:

158221

Grid lamp adapter:

For fitting into 62 x 62 cm grid ceilings.

158110

Recommended bulb:

18W, 3000K, 1350lm
548202

[PU see page 617]



GRID LAMP QRB/TCL

230~



Socket/Bulb:

G53/QRB111 (excl.)
3x 50W max.
and
2G11/TC-L EnergySaver (excl.)
2x 55W

Material:

Steel

Dimensions:

L/W/H: 60/60/17 cm

Accessory/Included parts:

Electronic ballast (incl.)
Electronic transformer (incl.)

Note:

For grid ceilings 60 x 60 cm.

Versions:

silver grey

Art. No.:

158202

Grid lamp adapter:

For fitting into 62 x 62 cm grid ceilings.

158110

Recommended bulb:

55W, 2700K, 4800lm, EEK=A
508450

Recommended bulb:

50W, 45°, 2700K, 700cd
543545





GRID LAMP LOBANG

230~



Socket/Bulb:
2G11/TC-L EnergySaver (excl.)
2x 55W

Material:
Steel

Dimensions:
L/W/H: 60/60/13 cm

Accessory/Included parts:
Electronic ballast (incl.)

Note:
For grid ceilings 60 x 60 cm.

Versions:
white

Grid lamp adapter:
For fitting into 62 x 62 cm
grid ceilings.

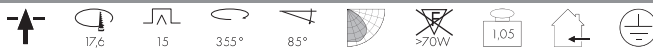
Recommended bulb:
55W, 2700K, 4800lm, EEL=A
508450

Art. No.:
158211

158110



GIMBLE PRO G12



HiEFFICIENT
PROFIlight.



Socket/Bulb:
G12/HQI-T, CDM-T (excl.)
35/70/150W

Material:
Aluminium/glass

Dimensions:
Ø/H: 18,6/15 cm

Accessory/Included parts:
Ballast (excl.)
Reflector (excl.)

Note:
For cavity ceilings with a material thickness up to max. 40 mm.

Versions:
white
silver grey

Art. No.:
162021
162024

Recommended bulb:
150W, 3000K, 14000lm
507140



Recommended bulb:
150W, 3000K, 15000lm
507440



ACCESSORY for Gimble Pro



Reflector for Gimble Pro G12
Aluminium chrome-plated
Ø/H: 10,75/5,3 cm 20° 162031
Ø/H: 10,75/6,3 cm 40° 162034
Ø/H: 10,75/5,4 cm 70° 162036
Design by CDC.

Art. No.:

CONNECTION RECOMMENDATION for Gimble Pro



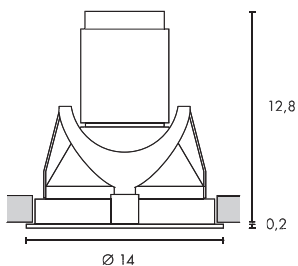
Elec. ballast for HQI/CDM
Short circuit proof
ta: 50°C, tc: 75°C

Art. No.:
230- 470370
150W 470380

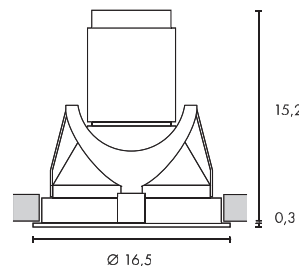
High-voltage connection line (961062) see right.



Beret GU6,5, Art. No.: 162144



Beret G12, Art. No.: 162154



BERET GU6,5



HiEFFICIENT
PROFIlight.



Socket/Bulb:
GU6,5/CMH-TC (excl.)
20/35W

Material:
Aluminium

Dimensions:
Ø/H: 14/13 cm

Accessory/Included parts:
Electronic ballast (excl.)
Reflector (excl.)

Note:
Suitable for cavity ceilings with a material thickness up to max. 30 mm.
Reflector see right. Suitable accessory like electronic ballast and high-voltage connection line see right.

Versions:
white
silver grey

Art. No.:
162141
162144

Recommended bulb:
35W, 3000K, 3300lm
507030



BERET G12



HiEFFICIENT
PROFIlight.



Socket/Bulb:
G12/HQI-T, CDM-T (excl.)
35/70/150W

Material:
Aluminium

Dimensions:
Ø/H: 16,5/15,5 cm

Accessory/Included parts:
Ballast (excl.)
Reflector (excl.)

Note:
Suitable for cavity ceiling with a material thickness up to max. 40 mm.
Reflector see right.

Versions:
white
silver grey

Art. No.:
162151
162154

Recommended bulb:
150W, 3000K, 14000lm
507140

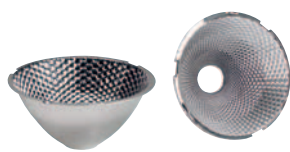


Recommended bulb:
150W, 3000K, 15000lm
507440

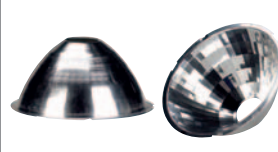




ACCESSORY for Beret GU6,5 and Beret G12



Reflector for Beret GU6,5 Art. No.:
Aluminium chrome-plated
Ø/H: 8,8/4,2 cm 16° 162161
Ø/H: 8,8/4,2 cm 70° 162166



Reflector for Beret G12 Art. No.:
Aluminium chrome-plated
Ø/H: 11,3/5,3 cm 20° 162171
Ø/H: 11,3/5,3 cm 40° 162173
Ø/H: 11,3/5,3 cm 70° 162176

CONNECTION RECOMMENDATION for Beret GU6,5 and Beret G12



Elect.ballast for HID bulb Art. No.:
35W 470361
Short circuit proof
ta: 50°C, tc: 75°C

230-



Elect.ballast for HQI/CDM Art. No.:
70W 470370
Short circuit proof
ta: 50°C, tc: 75°C

230-

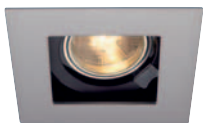
150W 470380



Connection line HV Art. No.:
Line-L: 2 m 961062
SO-2GMH2G-J 3x 1 mm²
Ignition voltage resistant
up to 5KV.
For HQI/CDM ballasts.

Further ballasts can be found in the accessory range.

INDI REC 1S GX10


HiEFFICIENT
PROFIlight.

Socket/Bulb:
 GX10/CMH-MR16 (excl.)
 20/35W

Material:
 Steel

Dimensions:
 L/W/H: 10/10/14 cm

Accessory/Included parts:
 Electronic ballast (excl.)

Note:
 Suitable for cavity ceilings with a material thickness of 0,5-20 mm. Further ballasts can be found in the accessory range.

Versions:
 silver grey/black

Art. No.:
 112484

Recommended ballast:
 Elect. ballast 35W for HID-bulb
 470361

Recommended bulb:
 35W, 40°, 3000K, 3000cd
 507340


NEW TRIA, GX10


HiEFFICIENT
PROFIlight.

Socket/Bulb:
 GX10/CMH-MR16 (excl.)
 20/35W

Material:
 Aluminium

Dimensions:
 Lamp-H: 10 cm
 Cover-Ø: 9 cm (round)
 Cover-L/W: 9/9 cm (square)

Accessory/Included parts:
 Electronic ballast (excl.)

Note:
 Further ballasts can be found in the accessory range.

Versions:
 square
 alu brushed
 matt white rough

Art. No.:
 111451
 113521

Versions:
 round
 alu brushed
 matt white rough

Art. No.:
 111450
 113520

Recommended bulb:
 20W, 40°, 3000K, 1500cd
 507240

Recommended bulb:
 35W, 40°, 3000K, 3000cd
 507340

Recommended ballast:
 Elect. ballast 20W for HID bulb
 470350

Recommended ballast:
 Elect. ballast 35W for HID bulb
 470361


HORN GX10


HiEFFICIENT
PROFIlight.

Socket/Bulb:
 GX10/CMH-MR16 (excl.)
 20/35W

Material:
 Metal

Dimensions:
 Ø/H: 8,5/13 cm

Accessory/Included parts:
 Electronic ballast (excl.)

Note:
 Further ballasts can be found in the accessory range.

Versions:
 white

Art. No.:
 112951

Recommended ballast:
 Elect. ballast 35W for HID bulb
 470361

Recommended bulb:
 35W, 40°, 3000K, 3000cd
 507340


NEW TRIA, G12


HiEFFICIENT
PROFIlight.

Socket/Bulb:
 G12/HQI-T; CDM-T (excl.)
 35/70W

Material:
 Aluminium

Dimensions:
 Lamp-H: 20 cm
 Cover-Ø: 16,5 cm (round)
 Cover-L/W: 16,5/16,5 cm (square)
 Max. ceiling thickness: 2 cm

Accessory/Included parts:
 Reflector 38° (incl.)
 Ballast (excl.)

Note:
 Further ballasts can be found in the accessory range.

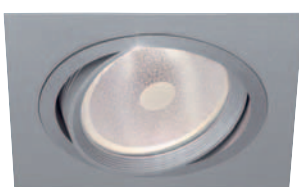
Versions:
 alu brushed
 round
 square

Art. No.:
 111680
 111681

Recommended ballast:
 Elect. ballast 70W
 for HQI/CDM
 470370

Recommended bulb:
 70W, 3000K, 6600lm
 507130


ROW G12


HiEFFICIENT
PROFIlight.

Socket/Bulb:
 G12/HQI-T; CDM-T (excl.)
 35/70W

Material:
 Aluminium/steel

Dimensions:
 Cover-L/W: 18/18 cm

Accessory/Included parts:
 Ballast (excl.)
 Reflector 30° (incl.)

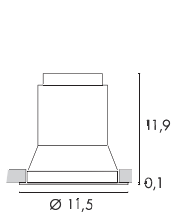
Note:
 Further ballasts can be found in the accessory range.

Versions:
 Glass satined
 silver grey

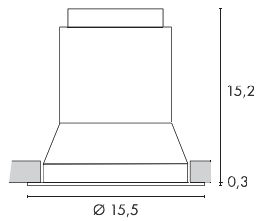
Art. No.:
 112551

Recommended ballast:
 Elect. ballast 70W
 for HQI/CDM
 470370

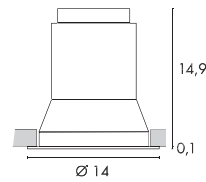
Recommended bulb:
 70W, 3000K, 6600lm
 507130

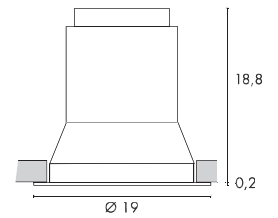
Art. No.: 162104



Art. No.: 162124



Art. No.: 162114



Art. No.: 162134

PROFIEFFICIENT
light.



PROFIEFFICIENT
light.



PROFIEFFICIENT
light.



PROFIEFFICIENT
light.



DIVIS GU6,5/G12



Material:
Aluminium

Accessory/Included parts:
Electronic ballast (excl.)
Reflector (excl.)

Note:
Suitable accessories like electronic ballast and high-voltage connection line can be found in the accessory range.
Deep reflector for glare limitation.

Recommended bulb:
35W, 3000K, 3300lm
507030



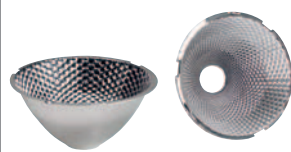
Recommended bulb:
150W, 3000K, 14000lm
507140



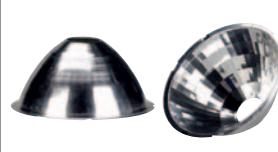
Article No.	Description	Colour	Socket/ Bulb (excl.)	Wattage bulb	Ø in cm	Height in cm	Inst. cut-out in cm	Inst. depth in cm	Weight
162101 ▼	DIVIS GU6,5 Downlight	white	GU6,5/CMH-T	20/35W	11,5	12,0	Ø 10,5	12,0	0,34 kg
162104 ▼	DIVIS GU6,5 Downlight	silver grey	GU6,5/CMH-T	20/35W	11,5	12,0	Ø 10,5	12,0	0,34 kg
162121 ▼	DIVIS GU6,5 Downlight deep	white	GU6,5/CMH-T	20/35W	15,5	15,5	Ø 14,8	15,5	0,62 kg
162124 ▼	DIVIS GU6,5 Downlight deep	silver grey	GU6,5/CMH-T	20/35W	15,5	15,5	Ø 14,8	15,5	0,62 kg
For cavity ceilings with a material thickness up to max. 30 mm.									
162111 ▼	DIVIS G12 Downlight	white	G12/HQI-T;CDM-T	35/70/150W	14,0	15,0	Ø 13,0	15,0	0,48 kg
162114 ▼	DIVIS G12 Downlight	silver grey	G12/HQI-T;CDM-T	35/70/150W	14,0	15,0	Ø 13,0	15,0	0,48 kg
162131 ▼	DIVIS G12 Downlight deep	white	G12/HQI-T;CDM-T	35/70/150W	19,0	19,0	Ø 18,0	24,0	0,78 kg
162134 ▼	DIVIS G12 Downlight deep	silver grey	G12/HQI-T;CDM-T	35/70/150W	19,0	19,0	Ø 18,0	24,0	0,78 kg

For cavity ceilings with a material thickness up to max. 40 mm. When using bulbs >70W, not suitable for fastening on normal flammable surfaces.

ACCESSORY for Divis GU6,5 and Divis G12



Reflector for Divis GU6,5 Art. No.:
Aluminium chrome-plated
Ø/H: 8,8/4,2 cm 16° 162161
Ø/H: 8,8/4,2 cm 70° 162166



Reflector for Divis G12 Art. No.:
Aluminium chrome-plated
Ø/H: 11,3/5,3 cm 20° 162171
Ø/H: 11,3/5,3 cm 40° 162173
Ø/H: 11,3/5,3 cm 70° 162176

CONNECTION RECOMMENDATION for Divis GU6,5 and Divis G12



Elect. ballast for HID bulb Art. No.:
35W 470361
Short circuit proof
ta: 50°C, tc: 75°C

230- Ballast
EEI=A2



Elect. ballast for HQI/CDM Art. No.:
70W 470370
Short circuit proof
ta: 50°C, tc: 75°C

230- Ballast
EEI=A2

150W 470380



Connection line HV Art. No.:
Line-L: 2 m 961062
SO-2GMH2G-J 3x 1 mm²
Starter short circuit proof
up to 5KV.
For HQI/CDM ballasts.

Further ballasts can be found in the accessory range.

ESSENS HQI 70W



HIEFFICIENT
PROFIlight.



Socket/Bulb:
RX7s/HQI-TS; CDM-TS (excl.)
70W

Versions:
70W white
70W silver grey

Art. No.:
162301
162304

Material:
Aluminium/glass

Dimensions:
Ø/H: 20/12 cm

Accessory/Included parts:
Ballast (excl.)

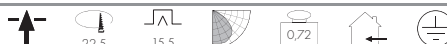
Recommended bulb:
70W, 3000K, 6000lm
509070

Recommended ballast:
Elect. ballast 70W
for HQI/CDM
470370

Note:

Suitable for cavity ceilings with a material thickness up to max. 40 mm.
Suitable accessories like electronic ballast and high-voltage connection line
see page 595.

ESSENS HQI 150W



HIEFFICIENT
PROFIlight.



Socket/Bulb:
RX7s/HQI-TS; CDM-TS (excl.)
150W

Versions:
150W white
150W silver grey

Art. No.:
162311
162314

Material:
Aluminium/glass

Dimensions:
Ø/H: 24,2/15,5 cm

Accessory/Included parts:
Ballast (excl.)

Recommended bulb:
150W, 3000K, 12000lm
509150

Recommended ballast:
Elect. ballast 150W
for HQI/CDM
470380

Note:

Suitable for cavity ceilings with a material thickness up to max. 40 mm.
Suitable accessories like electronic ballast and high-voltage connection line
see page 595.

SQUARE DL 195 G12



HIEFFICIENT
PROFIlight.



Socket/Bulb:
G12/HQI-T; CDM-T (excl.)
35/70W max.

Versions:
silver grey

Art. No.:
162044

Material:
Aluminium/steel/glass

Dimensions:
L/W/H: 19,5/19,5/20 cm

Accessory/Included parts:
Ballast (excl.)
Reflector 38° (incl.)

Recommended bulb:
70W, 3000K, 6600lm
507130

Recommended ballast:
Elect. ballast 70W
for HQI/CDM
470370

Note:

Suitable for cavity ceilings with a material thickness up to max. 15 mm.
Suitable accessories like electronic ballast and high-voltage connection line
see page 595.

HORN ADJUST Design by CDC



HIEFFICIENT
PROFIlight.



Socket/Bulb:
G12/CDM-T; HQI-T (excl.)
35/70W

Versions:
silver grey

Art. No.:
112944

Material:
Steel

Dimensions:
Lamp-Ø/H: 17/20 cm
visible H: max. 6,5 cm
(extracted condition)

Accessory/Included parts:
Ballast (excl.)

Note:

Suitable for cavity ceilings with a material thickness up to max. 30 mm.
Suitable accessories like electronic ballast and high-voltage connection line
see page 595.

Recommended bulb:
70W, 3000K, 6600lm
507130

Recommended ballast:
Elec. ballast 70W
for HQI/CDM
470370

Horn Adjust

Various setting positions:
Inboard (roof level)
extracted (max. 6 cm) with 30°
swivel range.



TWISTER recessed spot system

6 STEPS TO AN INDIVIDUAL LIGHTING SOLUTION

1. Select the spot basis in white, silver grey or chrome.



2. Select the frame for
- one or two lamps,
- round or square,
- white or silver grey.



3. Select the reflector with the needed angle of radiation.
(Not applicable for QRB111 and ES111 modules)



4. Select the suitable bulb for the module.



5. Select the electronic ballast or transformer suitable to the wattage of the bulb.
(Not applicable for ES111 modules)



6. For the GU6,5 module, the high-voltage connection line is additionally needed.





Twister GU6,5, silver grey
with silver grey frame (112970)



Twister QRB111, chrome
with white frame (112975)



Twister ES111, chrome
with white frame (112971)

TWISTER QRB111



Socket/Bulb :
G53/QRB111 (excl.)
75W max.

Material:
Aluminium

Dimensions:
Ø/H: 11/17 cm

Accessory/Included parts:
Transformer (excl.)
Frame (excl.)

Note:
Suitable for cavity ceilings with a
material thickness up to max. 5-20 mm.

Recommended transformer:
E-Transformer FN 04, 50-210VA
461217



Versions:
white
silver grey

chrome

Art. No.:
112841
112844

112842

Recommended bulb:
50W EnergySaver ± 75W
545752, 24°, 3000K, 5800cd



TWISTER ES111



Socket/Bulb :
GU10/ES111 (excl.)
75W max.

Material:
Aluminium

Dimensions:
Ø/H: 11/13 cm

Accessory/Included parts:
Frame (excl.)

Note:
Suitable for cavity ceilings with a
material thickness up to max. 5-20 mm.

Versions:
white
silver grey

chrome

Art. No.:
112851
112854

112852

Recommended bulb:
75W, 24°, 2700K, 2000cd
575672



TWISTER GU6,5



**HiEFFICIENT
PROFIlight.**



Socket/Bulb :
GU6,5/CMH-TC (excl.)
20/35W

Material:
Aluminium/steel

Dimensions:
Ø/H: 11/11,5 cm

Accessory/Included parts:
Deco ring (incl.)
Electronic ballast (excl.)
Frame (excl.)
Reflector (excl.)

Note:
Suitable for cavity ceilings with a
material thickness up to max. 5-20 mm.

Versions:
white
silver grey

chrome

Art. No.:
112961
112964

112962

Recommended ballast:
Electronic ballast 20W
for HID bulb
470350



Recommended bulb:
20W, 3000K, 1615lm
507020



Recommended bulb:
35W, 3000K, 3300lm
507030



ACCESSORY for Twister GU6,5



Reflector

Aluminium, chrome	12°	Art. No.:
Ø/H: 9,5/8 cm	24°	153721
	38°	153722
	60°	153723
		153726

CONNECTION RECOMMENDATION for Twister GU6,5



Connection line HV

Line-L: 2 m	Art. No.:
SO-2GMH2G-J 3x 1 mm ²	961062
Ignition voltage resistant up to 5KV.	
For HQI/CDM ballasts.	
Further electronic ballasts can be found in the accessory range.	

**TWISTER 1 FRAME round****Material:**
Aluminium**Dimensions:**
Ø/H: 15/5,5 cm**Note:**
Suitable for cavity ceilings with a material thickness up to max. 25 mm. Installation dimension measured with mounted lamp.**Versions:**
white
silver grey**Art. No.:**
112971
112970**TWISTER 2 FRAME round****Material:**
Aluminium**Dimensions:**
L/W/H: 30/15/5,5 cm**Note:**
Suitable for cavity ceilings with a material thickness up to max. 25 mm. Installation dimension measured with mounted lamp.**Versions:**
white
silver grey**Art. No.:**
112981
112980**TWISTER 1 FRAME square****Material:**
Aluminium**Dimensions:**
L/W/H: 15/15/5,5 cm**Note:**
Suitable for cavity ceilings with a material thickness up to max. 25 mm. Installation dimension measured with mounted lamp.**Versions:**
white
silver grey**Art. No.:**
112975
112974**TWISTER 2 FRAME square****Material:**
Aluminium**Dimensions:**
L/W/H: 30/15/5,5 cm**Note:**
Suitable for cavity ceilings with a material thickness up to max. 25 mm. Installation dimension measured with mounted lamp.**Versions:**
white
silver grey**Art. No.:**
112985
112984



PROFILIGHT
HIEFFICIENT

PROFILIGHT
HIEFFICIENT



HQI-TS DL 70/150



Material:
Aluminium

Note:
Suitable accessories like electronic ballast and high-voltage connection line see page 595.

Recommended bulb:
70W, 3000K, 6000lm
509070

Recommended bulb:
150W, 3000K, 12000lm
509150




Accessory/Included parts:
Ballast (excl.)

Article No.	Description	Colour	Socket/ Bulb (excl.)	Wattage bulb	Length in cm	Width in cm	Depth in cm	Inst. cut-out in cm	Inst. depth in cm	Swivel range
150921	HQI-TS DL 70	white	Rx7s/HQI-TS;CDM-TS	70W	13	14,5	23	12,5/21	12	75°
150929	HQI-TS DL 70	silver grey	Rx7s/HQI-TS;CDM-TS	70W	13	14,5	23	12,5/21	12	75°
150931	HQI-TS DL 150	white	Rx7s/HQI-TS;CDM-TS	150W	13	14,5	23	12,5/21	12	75°
150939	HQI-TS DL 150	silver grey	Rx7s/HQI-TS;CDM-TS	150W	13	14,5	23	12,5/21	12	75°

CONNECTION RECOMMENDATION for HQI-TS DL 70 and HQI-TS DL 150



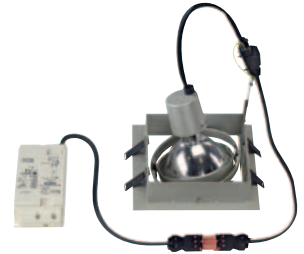
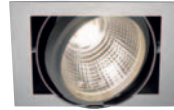
230~ 
Elect. ballast
for HQI/CDM **Art. No.:**
 Short circuit proof 70W 470370
 ta: 50°C, tc: 75°C
 150W 470380



Connection line HV
 Line-L: 2 m
 SO-2GMH2G-J 3x 1 mm²
 Ignition voltage resistant
 up to 5KV.
 For HQI/CDM ballasts.

Art. No.:
961062

HQI DOWNLIGHT-SETS



HQI-SQUARE DL 195-SET



Accessory/Included parts:

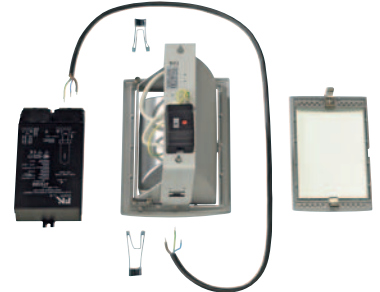
Square DL 195 G12, (incl.)
 Electronic ballast HQI/CDM 70W, (incl.)
 Wieland GST18 5KV plug (incl.)
 Wieland GST18 5KV socket (incl.)

Recommended bulb:

70W
 507130, 3000K, 6600lm
 507131, 4200K, 12700lm



Article No.	Set consisting of	Colour	Wattage bulb	Weight
162054	Square DL 195 70W, Electronic ballast HQI/CDM 70W, Wieland GST18 5KV plug and socket Bulb (excl.)	silver grey	70W	1,9 kg



HQI-TS DL 70/150-SET



Accessory/Included parts:

HQI-TS DL see left (incl.)
 Electronic ballast HQI/CDM 70W/150W, see page 595 (incl.)
 High-voltage connection line, see page 595 (incl.)

Recommended bulb:
 70W, 3000K, 6000lm
 509070



Recommended bulb:
 150W, 3000K, 12000lm
 509150



Article No.	Set consisting of	Colour	Wattage Bulb	Weight
150971	HQI-TS DL 70, Electronic ballast HQI/CDM 70W, high-voltage connection line	white	70W	1,4 kg
150979	HQI-TS DL 70, Electronic ballast HQI/CDM 70W, high-voltage connection line	silver grey	70W	1,4 kg
150981	HQI-TS DL 150, Electronic ballast HQI/CDM 150W, high-voltage connection line	white	150W	1,7 kg
150989	HQI-TS DL 150, Electronic ballast HQI/CDM 150W, high-voltage connection line	silver grey	150W	1,7 kg

Bulb (excl.)